



MIEKE ZILVERBERG

ANCIENT ART & ANCIENT COINS



PAN
AMSTERDAM

STAND 76

19 - 26 november 2023

PAN AMSTERDAM - 2023

EGYPT - VARIA



1. POLYCHROME WOOD PANEL WITH GODDESS NUT

Fragment from outside bottom of sarcophagus. Decorated with a standing figure of the sky-goddess NUT, mother of Isis and Osiris, wearing black wig and banded vase on her head, being part of the name 'NU', holding a long cord with a large lotusflower pendant; clad in close-fitting 'sexy' dress of tile design in blue, red, white and black colors. Some discoloring and part of upper right corner broken off, otherwise intact. Ex priv. coll. of the late Prof. H.F.G.J. v.d. E, Netherlands, acquired before 1974, thence by descent.

Dim. 79 x 17 cm. Mounted.

Late Third Intermediate - Ptolemaic Period, c. 760 - 3rd cent. BC

€ 15.500



2. POLYCHROME PAINTED WOOD BA BIRD

Finely painted features on applied gesso, blue tripartite wig and false beard, surmounted by solar disc; wings and talons coloured red, legs with stippled feather details. Ex priv. coll., USA, acq. between 1970 - 1989; priv. coll. N.F., Netherlands, acq. from Bonhams, London 2009.

H. 8.5 cm. Mounted on black stand.

Ptolemaic Period, c. 300 - 30 BC

€ 19.750

Cf. S. Dária, P. Lacovara, C.H. Roehrig, Mummies and Magic, Museum of Fine Arts Boston, 1983, fig. 148a, b, pp. 199-200; M.J. Raven, De Dodencultus van het Oude Egypte, Amsterdam 1992, p. 67, no. 26.

The Egyptians believed that a person's essence or soull was composed of several elements. The Ba was one of the elements of the spirit with personality and emotions. It stayed close to the body of the deceased and was eventually reunited with other elements, to live eternally in the Afterlife.



3. POLYCHROME WOOD SARCOPHAGUS MASK

Gesso painted wood mask, reddish brown over white gesso, with large almond-shaped eyes in black and white, large part of white painted wig with traces of black decoration; flat back. Some paint flaked off.

Ex priv. coll. H.L. (1903-1976) acq. in 1956; hence by inheritance priv. coll. G.S., Netherlands.

Dim. 20,5 x 12 cm.

Intermediate - Late Period, 10th - 3rd cent. BC

€ 5.975



4. WOOD STAUETTE OF A BABOON

A manifestation of the god Thoth, the baboon squats on its hind-quarters, his hands resting on his knees, revealing his pronounced genitalia. The plain mantle hangs down his front and back; he rests on an integral base with rounded back edge.

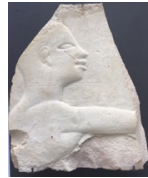
Ex coll. Gustave Mustaki, Alexandria, Egypt; exported from Egypt to the UK circa 1950; Elsa MacLellan, UK, by descent from the above; priv.coll., London, UK, by descent from the above; priv. coll., Rome, Italy, acq. 2012; Charles Ede Ltd., London.

H. 10 cm. Snout reattached, ancient hole at underside.

Late Period, 25th -31st Dyn., c. 746-332 BC.

€ 16.000 Rare

Cf. For Thoth as baboon M. Morgensen, La Glyptothèque Ny Carlsberg, la Collection Égyptienne (Copenhagen, 1930), p. 58-59; pl. LVI, nos. 420-422



5. SMALL LIMESTONE RELIEF FRAGMENT OF SERVANT

Carved in raised relief showing bust of a bald young man reaching out with his right arm to the right, facial features with almond-shaped eye, pointed nose, full lips and large ear.

Ex priv. coll. F.Z., Netherlands, acq. from M. König, Brussels 1990.

Dim. 9,1 x 8 cm. Mounted on black stand

Late Period, 26th Dyn., 7th - 6th cent. BC

€ 6.500

Cf. I. Gamer-Wallert, Fundort unbekannt. Privatsammlern Stuttgart, Tübingen 1997, Taf. 25, Nr. 92; Cahn Auktionen 2014, no. 43



6. MARBLE STATUETTE OF HARPOCRATES

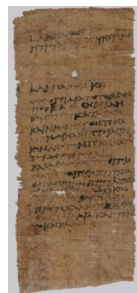
Naked figure of Harpocrates, tress of hair showing on shoulder, raising one arm, the other alongside his body. Mounted on black stand.

Ex coll. N.D., Belgium; formerly priv. coll., UK.

H. 12 cm.

Alexandria, 1st cent. BC - 1st cent. AD

€ 4.250



7. GREEK PAPYRUS ORDER FRAGMENT

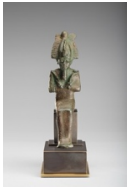
Greek text of 18 lines in black ink of an order for a ship freight.

Dim. 23,7 x 9,9 cm. Mounted between glass. Ex priv. coll. G.J.M. M., Netherlands, acq. from M. Fackelmann, Austria 1975

2nd cent BC, 149 BC. Date mentioned in text

€ 3.975

EGYPT - BRONZES



8. BRONZE FIGURE OF SEATED OSIRIS

Enthroned and mummiform god, holding crook and flail in crossed arms, wearing Atef-crown with feathered side plumes and uraeus; solid cast. Ex priv. coll. M.v.S., Netherlands, acq. from auction Mak van Waay, Amsterdam 1999 - 2000; before, priv. coll. W. Stuivenberg, Netherlands 1950 - 1995.

H. 11 cm. Green patina. Mounted
Saite Period, 26th Dyn., 664-525 BC

€ 7.250



9. BRONZE FIGURE OF KHONSU

Enthroned god of Karnak, son of Amun and Mut, clad in plaited skirt, wearing striated wig with frontal uraeus and lunar disc (missing) within crescent moon; arms bent, both hands clenched and pierced for holding a sceptre, rectangular base, tang underneath. Ex priv. coll. L.J., Netherlands 2015; before priv. coll. A.L., Germany 1960 - 1972

H. 8,2 cm. Brown patina, small restoration at lunula.

Late Period - Ptolemaic Period, 4th - 2nd cent. BC

€ 3.975

Cf. G. Roeder, *Aegyptische Bronzefiguren*, Berlin 1956, §215b, T78e



10. BRONZE FIGURE OF NEFERTUM AMULET

Solid cast statuette of Nefertum, god of beauty and healing, son of Ptah and Sechmet, standing on rectangular base with his arms alongside, wearing short plaited skirt, crown of large lotus flower on his head, loop at back. Ex Harmer Rooks, USA 1989.

H. 8 cm. Brown and red patina.

Late Period-Ptolemaic Period, 4th- 3rd cent. BC

€ 3.250

Cf. C. Andrews, *Amulets of Ancient Egypt*, London 1994, p.18, fig. 12 var.

EGYPT - USHABTIS

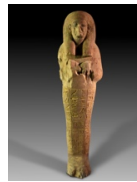


11. LARGE POLYCHROME WOOD USHABTI

Mummiform, wearing tripartite black wig, hands crossed over chest holding hoes, seed bag at the back, six rows of hieroglyphic text from chapter 6 of the Book of the Dead, the so-called shabti spell; the name of the owner was to be added in the empty space in the first line "The enlightened Osiris so-and-so, he says", or "... she says".. Ex priv. coll. P.A., New York (1908-2004), a UN diplomat who acquired the piece in Cairo in 1970; thence by descent; with Royal Athena Galleries, New York, vol. XVIII 2007, no. 219; priv. Virginia coll., acq. from the above in 2008; thereafter with Sands of Time Ancient Art, Washington DC.

H. 24,8 cm. Crack in the back, otherwise intact
New Kingdom, 19th-20th Dyn., c. 1292-1070 BC

€ 12.500

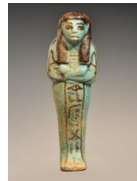


12. LARGE WOOD USHABTI OF MENKEPER

Mummiform, wearing tripartite wig, hands crossed over chest, six vertical columns of carved hieroglyphs: '...To be recited by Menkeper; he says: O, these shawabties, if one counts, if one reckons, if one calls in the realm of the dead, to do all the works which are wont to be done there, to cultivate the fields, to irrigate the riparian lands, to transport sand by boat from the west to the east - now indeed obstacles are implanted for you there - as a man at his duties when you are counted upon at any time to serve there: "Here I am", you shall say...'

Ex priv. coll. Walter and Mary-Louise Daniels, San Francisco, acq. c.1973
H. 26,5 cm. Damage to face and left upperpart of body
New Kingdom, 18th Dyn, reign of Tutmosis III, 1479 - 1425 BC or shortly after.

€ 8.500



13. BLUE GREEN FAIENCE USHABTI OF (DI-)PAY

Mummiform, black tripartite wig, holding hoe in each of his crossed hands, frontal column of hieroglyphs in black reading:

'...The Osiris, the *shedj* Dipay, justified...'

Ex coll. M.H., acq. from Alexander Ancient Art, Netherlands 2010; before, coll. M. Betz, USA (2006)

H. 12,9 cm. Intact

New Kingdom, 19th - 20th Dyn., c. 1293-1085 BC

€ 5.250



14. BRILLIANT BLUE FAIENCE USHABTI OF NESY-PER-NUB

Scribe of god's father Mut, holding hoe in his crossed hands, black details of striated tripartite wig, heart amulet and two vertical columns of hieroglyphs reading: '...I will irrigate (the riparian lands) for the Osiris, the Scribe and God's Father of Mut, Nesiy-per-nub, justified...'

Ex priv. coll. Dr. J.W. Leyds, acq. 1926-7, hence by inheritance

priv. coll. T.v.A., Netherlands

H. 14,5 cm. Intact. Mounted

Third Intermediate Period, 21st Dyn., 1069 - 945 BC, Deir-el-Bahri, II Cachette, Thebes

€ 15.000

Cf. G. Janes, *Shabtis*, Paris 2002, p. 101; L. Aubert, *Les Statuettes de la deuxième Cachette de Deir-el-Bahri*, p. 76



15. BRIGHT BLUE FAIENCE USHABTI OF TASHED

Mummiform, wearing striped wig, pick and hoe in crossed hands, text 'The Lady of the House, Chantress of Amun, Tashed'; seed bag at the back. Ex Bonhams London, 2013.

H. 11 cm. Mounted on perspex stand

TIP, 21st Dyn. C. 1069-945 BC

€ 2.475

EGYPT - AMULETS



16. RED JASPER TIT AMULET

Girdle of Isis in red jasper, colour of the blood of Isis, giving protection, loop-shaped with long sash, flanked by two folded loops with incised details, back flat. Ex Christies London, December 1996
H. 4,8 cm. To be placed on the neck of the deceased.
New Kingdom, 18th-19th dyn., 1650-1085 BC

€ 2.500

Cf. C. Andrews, *Amulets of Ancient Egypt*, London 1994, pp.44-45, fig. 49; Petrie, *Amulets* 88



17. LARGE BLUE FAIENCE BES AMULET

Dwarf-like god of children and music, standing frontal on his bandy legs, his hands holding a rounded object (tambourine?), wearing a large feather crown on his head. Ex priv. coll. J. Eisenberg, New York, acq. 1984, thence Sands of Time Ancient Art, Washington DC, USA.
H. 7,5 cm Intact

Third Intermediate Period, 21st Dyn., c. 1070-945 BC

€ 7.775



18. BLUE GREEN FAIENCE AMULET OF ISIS SUCKLING HORUS

Isis with hieroglyph for her name on her head, suckling infant Horus, propped up by her left hand, seated on throne decorated with cross-hatching in relief. Ex priv. coll. H. Z., Netherlands, acq. PAN fair 1999.
H. 3,9 cm. Intact, pierced for wearing.

Late Period – Ptolemaic Period, 6th-3rd cent. BC

€ 2.500

Cf. C. Andrews, *Amulets of Ancient Egypt*, London 1994, p. 22 no. 18b



19. BLUISH FAIENCE AMULET OF TAUERT

Goddess of pregnancy, in shape of pregnant hippopotamus holding her hands on her belly as to protect it, wearing striped wig, and leaning on her large hatched tail at the back; small ring at neck for wearing.

Ex priv. coll. H. Z., Netherlands, acq. from Archea 2001.

H. 3,9 cm. Intact.

Saite Period, 26th Dyn., 664-525 BC.

€ 1.975

Cf. C. Andrews, *Amulets of Ancient Egypt*, London 1994, p. 22 no. 39b
Sir. W.M. Flinders Petrie, *Amulets*, London 1975, no. 236



20. PAIR OF MINI BLUE FAIENCE PAINT POTS

Completely 'painted' in greenish blue faience, small flattend lip, body tapering to flat bottom. Ex priv. coll. H.Z., Netherlands, acq. PAN fair 1995 from priv. coll. J.B., Netherlands 1995.

H. 1,8-2,1 cm; diam. 3,8-4,1 cm. Intact

Late Period, 6th-4th cent. BC

€ 2.500

NEAR EAST



21. MESOPOTAMIA. ZOOMORPHIC CALCITE SEAL

Stamp seal in shape of a recumbent lion with its mouth slightly open, its tail curled around its hind. Reverse carved with figures of four dogs. Ex priv. coll. J. Kist, Netherlands 1990s. Vertically pierced.

Dim. 3,8 x 5,6 x 1,7 cm. Mounted. Black plastic imprint available.

Djemdet Nasr Period, c. 3200 BC.

€ 3.575

Publ. Joost Kist, *Ancient Near Eastern Seals from the Kist Collection*, Brill Leiden 2003, no. 011; cf. Sumer, Assur, Babylon, Berlin 1979, nos. 39-42



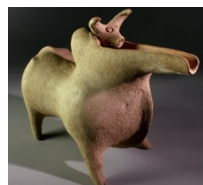
22. SYRO-HITTITE TERACOTTA IDOL

Slender stylized figure of beaked female figure, supporting her applied round breasts with her arms, broad striped collar around her neck, applied dot roundel above her pubic area indicated by three rows of slashes. Ex priv. coll. P.v. R., Netherlands 1992s, inherited by P.G., 2008.
H. 15,1 cm. Intact. Flat back.

2nd mill. BC.

€ 1.975

Cf. L. Badre, *Les Figurines Anthromorphes en Terre Cuite à L'Age du Bronze en Syrie*, Paris, 1980, pls. X-XI; M.N. van Loon e.a., *Gids voor afdeling West-Azië*, Allard Pierson Museum, Amsterdam 1989, afb.18



23. AMLASH TERRACOTTA ZEBU SPOUTED VESSEL

Standing on four short legs with pronounced hump turning into spouted and horned head with small bull's head on top.

Ex priv. coll. Sam Dubiner (1914-1993), Israel, acq. 1954-1958

Dim. 19 x 24,5 cm. Intact

c. 1200 - 1000 BC, South Caspian Region

€ 28.000

Cf. W. Seipel, *7000 Jahre Perische Kunst*, Kunsthistorisches Museum Wien, 2000, pp. 156-159, Kat. Nr. 83; G. Körlin-T. Stöllner, *5500 Jahre Geschichte in Ton*, Bochum 2008, p. 76, no. 1; *Artefact*, 150 Jaar Rijksmuseum van Oudheden 1818-1968, Leiden 1968, p.25, pl. 20



24. ANATOLIA. LIMESTONE COSMETIC CONTAINER

Small cosmetic container in the shape of a calf's head with carved details; small circular container carved out its back of the neck.
Ex priv. coll. London, acq. from Mayfair Gallery, early 1990s, coll. nr. 88.382; thence priv. coll. H.v.H, Netherlands, after 2000.

Dim. 3,8 x 5,7 cm. Mounted.

1st mill. BC

€ 5.500



25. ELAMITE BRONZE MACE HEAD

Long cylindrical shaft decorated with four vertical rows of spikes divided by vertical double bands with incised v-shaped decoration, as well above and below the spikes, imitating cords.

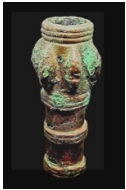
Ex coll. A.B., Netherlands, acq. from Christie's London 2003.

H. 19,3 cm. Green patina. Intact

Late 3rd mill. BC

€ 3.500

Cf. P.R.S. Moorey, *Catalogue of the Ancient Persian Bronzes in the Ashmolean Museum*, Oxford 1971, no. 97, pl. 10



26. LURISTAN MINI BRONZE MACE HEAD

Small hollow mace head with knobs and four ringbands.

H. 7,2 cm. Ex priv. R.v.D., Netherlands, before 1990

3rd mill. BC. Brown and green patina

€ 495



27. ANATOLIAN/LURISTAN/CANAANITE BRONZE AXE HEAD

Fenestrated axe-head with crescentic semi-circular blade. Green patina.

Dim. 9,5 x 8,2 cm. Ex Sotheby's New York 2002

Early 2nd mill. BC, 18th-17th cent. BC

€ 1.875

cf. O. Negbi, *Canaanite Gods in Metal*, Tel Aviv 1976, p. 123, fig. 138



28. NW-IRAN/ LURISTAN BRONZE CRESCENTIC AXE HEAD

Crescent-shaped blade with five projecting spikes in centre.

Ex estate of Rabi Soleyman, London; thereafter Alexander Ancient Art.

H. 24,5 cm. Green patina. Mounted

Early 1st mill. BC

€ 2.500

Cf. P.R.S. Moorey, *Catalogue of the Ancient Persian Bronzes in the Ashmolean Museum*, Oxford 1971, no. 26, pl. 3.



29. THREE AMLASH/LURISTAN SWORDS

a. Short iron leaf-shaped sword, blade with central rib, hilt with crescentic pommel with pin, Some corrosion.

H. 49,5 cm. Mounted.

Ex priv. coll. M.v.S., acq. Drouot, Paris, 1970s.

Amlash, 1000-800. BC.

€ 5.800

Cf. P.R.S. Moorey, , *Catalogue of the Ancient Persian Bronzes in the Ashmolean Museum*, Oxford 1971, no. 54

b. Short cast bronze sword, tapering blade with broad central rib, hilt with parasol-shaped pommel, hilt cast to the blade, rectangular guard.

H. 50 cm. Green patina. Mounted.

Ex priv. coll. M.v.S., Drouot, Paris, 1970s.

Luristan, 9th-8th cent. BC

€ 10.000

Cf. P.R.S. Moorey, , *Catalogue of the Ancient Persian Bronzes in the Ashmolean Museum*, Oxford 1971, no. 61.

c. Iron sword with bronze hilt; long small tapering iron blade, midrib, with hood-shaped engraved pommel.

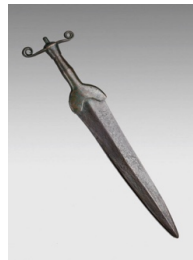
H. 54, 3 cm. Mounted.

Ex priv. coll. M.v.S., acq. Drouot, Paris, 1970s.

Luristan, 9th -8th cent. BC

€ 7.000

Cf. P.R.S. Moorey, , *Catalogue of the Ancient Persian Bronzes in the Ashmolean Museum*, Oxford 1971, no. 57 (hood)



30. EUROPEAN BRONZE SWORD OR DAGGER

Hilt decorated with incised dots, separate cross-piece having upward curled corners and pin on top for now missing inlaid part of bone or wood; blade with central rib. Ex Drouot, Paris 1970s

H. 40,7 cm. Brown patina. Mounted on bronze stand.

Probably Hallstatt or La Tène period, 8th -7th cent. BC

€ 9.750



31. LURISTAN CEREMONIAL AXE HEAD

Bronze axe-head with cylindrical shaft-hole and four rows of spikes.

Ex priv. coll. L.v.Roozendaal, Netherlands, acq. before 1989.

H. 18,5 cm. Green and red patina. Mounted. Intact.

10th-9th cent. BC

€ 3.475

Cf. P.R.S. Moorey, *Catalogue of the Ancient Persian Bronzes in the Ashmolean Museum*, Oxford 1971, no. 17-19, pl. 2-3.



32. SUMERIAN BRONZE OFFER BEARER

Naked male figure with long striated hair and a beard, standing with his slightly wide apart, his arms cut off.

Ex priv. coll. F. O., Netherlands, acq. PAN Amsterdam 1997; before, M.A. Bax, ex priv. coll. H. Smeets, Netherlands.

H. 11,5 cm. Heavy red and brown patina. Mounted. Very rare 3rd mill. BC, c. 2700 BC

€ 17.500

Publ. H. Smeets Collection, Weert 1975, p. 30, no. 34.



33. CANAANITE BRONZE FLAT FEMALE IDOL

Flat cast female idol figure with small breasts, rounded head with large applied eyes, nose and mouth, holding one arm across her elongated body to her abdomen, one arm missing, standing on shortened legs.

Ex priv. coll. G.C. O., Netherlands, acq. Tefaf 2003; before, Jacques Schulman BV, Amsterdam 1979.

H. 10,3 cm. Mounted on Perspex. Green patina.

Early 2nd mill. BC., The 'Syrian' Group, so-called war gods figures

€ 4.250

Cf. O. Negbi, *Canaanite Gods in Metal*, Tel Aviv University 1976, no.24



34. LURISTAN BRONZE SPOUTED VESSEL

Slightly curved carinated body with incised decoration of lying goat between two lions, manes hatched; flaring upperpart with large narrowing beak.

Ex priv. coll. H.v.H., Netherlands, ex G.G., London 1980s.

H. 17,5 cm. Intact, green and red patina. Small chip from rim.

1st mill. BC, 8th - 7th cent. BC. Rare

€ 7.000

Cf. P.R.S. Moorey, *Catalogue of the Ancient Persian Bronzes in the Ashmolean Museum*, Oxford 1971, pp. 276-280



35. LURISTAN HORSE-BIT

Complete bronze cast bit, rigid mouthpiece of square section with terminals turned over in opposite directions; subrectangular openwork plaques in shape of foreparts of a horse with four spikes on each others neck; casting spouts on the upper and lower corners of the back edge.

Ex priv. coll. E.F.M. B.H., Netherlands 1990s-, acq. From Jaap Polak, Amsterdam, Tefaf March 18, 2002

Dim. 8,2 x 14 cm; mounted on perspex stand, nice green patina 8th - 7th cent. BC

€ 7.000

Cf. P.R.S. Moorey, *Catalogue of the Ancient Persian Bronzes in the Ashmolean Museum*, Oxford 1971, pp. 108-9, no 108a/b, pl. 13



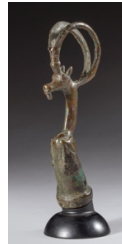
36. LARGE LURISTAN BRONZE PIN

Plain cast square shank tapering with heavy open-cast head, consisting of curved ibex head with circular horns covered with cusps, small rams head at the forepart of its neck, attacked by a lion jumping onto its neck. Ex priv. coll. E.M.F. B-H., Netherlands, acq. from Jaap Polak, Amsterdam 2005. Exceptional large for its size.

Dim. 11 x 30 cm. Mounted, green and brown patina, partly cleaned 8th - 7th cent. BC

€ 7.500

Cf. P.R.S. Moorey, *Catalogue of the Ancient Persian Bronzes in the Ashmolean Museum*, Oxford 1971, pp. 197-199, pl. 53



37. LURISTAN BRONZE WHETSTONE SOCKET

Handle in form of a recumbent moufflon with two large circular horns from forehead with pointed ears till the back of long neck; its forelegs in low relief on front of socket, pierced at the end for fastening. Ex coll. Galerie Arabesk, Stuttgart, Germany end 1980s, hence priv. coll. M.v.S., Netherlands.

H. 13,9 cm. Dark green patina. Mounted

8th - 7th cent. BC

€ 3.275

Cf. P.R.S. Moorey, *Catalogue of the Ancient Persian Bronzes in the Ashmolean Museum*, Oxford 1971, p. 99, pl. 11, no. 104



38. PARTHIAN BRONZE GIRDLE CLASP

Square belt buckle in the form of a horse standing to the left, small hook for fastening in front; relief roundels at the four corners and on the body of the horse; reverse flat. Ex coll. E.R., Rotterdam 1960s-1970s

Dim. 7 x 7,6 cm. Dark brown patina. Mounted on perspex stand.

2nd - 4th cent. AD

€ 2.750

GREECE



39. ANATOLIAN TERRACOTTA FRIEZE FRAGMENT

Polychrome relief fragment with horserider galloping to right; scene bordered by relief rim, pierced in left upper field for pin attachment.

Mould-made. Ex priv. coll. A.R., London, acq. from Sotheby's London 24 February 1965, lots 50-64. Dim. 33,5 x 38 cm. Paint flaked off

6th cent. BC

€ 4.000

Cf. see also Sotheby's London, auction 6th July 1964 nrs. 45-47, and 28th June 1965, lots 89-91



40. ANATOLIAN TERRACOTTA FRIEZE PLAQUE

Polychrome fragment of architectural revetment from a frieze decorated in red, white and black with a horseman in relief, galloping to the right; hind part of horse with triskeles emblem, rider wearing long black hair and long white trousers; base with alternating red and black squares. Mould-made. Ex priv. coll. A.R., London, acquired from Sotheby's London 24 February 1965, lots 50-64.

Dim. 25 x 19 cm

6th cent. BC

€ 3.500

Cf. see also Sotheby's London, auction 6th July 1964 nrs. 45-47, and 28th June 1965, lots 89-91



41. ANATOLIAN TERRACOTTA FRIEZE FRAGMENT

Polychrome fragment of architectural revetment from a frieze decorated in red, white and black with hind part of a horseman in relief, galloping to the right, wearing long hair and long white trousers. Mould-made

Ex priv. coll. A.R., London, acquired from Sotheby's London 24 February 1965, lots 50-64. Dim. 23 x 17,5 cm

6th cent. BC, Anatolia

€ 3.000

Cf. see also Sotheby's London, auction 6th July 1964 nrs. 45-47, and 28th June 1965, lots 89-91



42. CORINTHIAN RING ARYBALLOS

Terracotta aryballos in shape of a ring with short neck with chequer board pattern, two handles from rim to shoulder, body decorated on both sides with running dog above and waterbird below, small central chequer pattern, on low stemmed ring foot with bands; one side turned red in firing. Ex priv. coll. P.v.R., 1992-2008, thence by inheritance coll. P.G., Netherlands.

H. 13,5 cm, diam. 10,3 cm. Unusual shape.

6th cent. BC

€ 2.500



43. CORINTHIAN POTTERY ARYBALLOS

Spherical body, neck and mouth completely varnished with brown slip, body and upperpart of disc-shaped mouth decorated with vertical incised 'melon' segments, of which five body segments with added white. Ex priv. coll. C. Stibbe, Netherlands; hence coll. L. v. Roozendaal, Netherlands, acq. 1987 from former owner; thence by descent.

H. 6,5 cm. Small chip from body and mouth, lead seal attached Middle Corinthian, c. 600-575 BC

€ 2.250



44. CORINTHIAN WARRIOR ARYBALLOS

Spherical body decorated with five helmeted and bearded warriors carrying large red shield and spear. Ex priv. coll. M.B., Netherlands 2006, from Gallery M.Z. 2002, acq. from Bonhams London 2002

H. 6,5 cm. Intact

Late Corinthian, 575-550 BC

€ 3.500

cf. W Hornbostel, Kunst der Antike, Mainz 1977, no. 215



45. CORINTHIAN ARYBALLOS

Spherical body decorated with youth on horseback galloping to the right, filling ornaments of rosettes in field, petals on top of disk-shaped mouth, around shoulder and base, dotted rim; short cylindrical neck, small band handle. Ex priv. coll. G.O., Netherlands, acq. from Gallery M.Z.; before, HAC, Basel 1997

H. 6,6 cm. Intact

Middle Corinthian, Royal Library Painter, c. 600 BC

€ 5.250

Note: attribution Dr. C.W. Neeft, Amsterdam 1997



46. CORINTHIAN ARYBALLOS

Globular body decorated with two rows of incised scale pattern with central red dot, lower part of body with red tongues, discus-shaped mouth with incised z-pattern, alternating red and black tongues on top; broad angular handle from mouth to shoulder with large red cross.

Ex priv. coll. J.A.Z., Netherlands 1990s, coll. R.Z. by inheritance 2020.

H. 10,5 cm. Intact, some weathering

6th - 5th cent. BC

€ 2.000



47. ATTIC BLACK FIGURE SIANA CUP

Large kylix on low stemmed foot with symposium scene on side A showing four couches, each with a symposiast conversing with each other, white dotted wreaths hanging above, small table with food in front; side B horsemen scene showing four naked horseriders galloping to the left, third horse in added white paint, rosette and bird in field. Inside tondo decorated with heraldic sphinx within tongue pattern bordered by four concentric circles; terracotta pin at underside foot.

Added red and white paint for details. Ex priv. coll. L.v.R., Netherlands, acq. from Sotheby's London, July 1985 no. 207

H. 12,8 cm; diam. cup 26 cm. Intact. Some paint flaked off

Greece, 565 - 560 BC by the Taras Painter

€ 9.000

Cf. H.A.G. Brijder, Siana Cups II, Amsterdam 1991, p. 480, pls 161a-b, 162d.



48. ATTIC RED FIGURE KYLIX

Shallow cup kylix on high stem decorated at the outside with a scene on either side of two couples of youths courting boys, the elder leaning on a stick; inbetween the couples a writing diptych with stylus and a purse, a bag for knucklebones hanging above at the right. Inside, a draped bearded man standing to the left before an altar, holding a staff, a pair of sandals hanging behind; inside and outside a Greek inscription of 'ho pais kalos' (the boy is beautiful)

Ex Münzen und Medaillen, Basle 1984; Jürgen Haering, Galerie am Museum, Freiburg 1984-5; dr. L. v. R., Netherlands, 1985-2018
Dim. 38,5 x 13,5 cm, with handles included.

Tarquinius Painter, c. 470 BC

€ 32.500

Published: *Galerie Nefer, catalogue 2, Zürich 1984, no. 81; Beazley Archive Pottery Database, no. 15223; cf. J. Boardman, Athenian Red Figure Vases, The Classical Period, London 1989, p. 38*

The Tarquinia Painter was a pupil of the Antiphon painter, a companion of the Pistoxenos Painter, and thus a later member of the workshop run by the famous cup-potter Euphronios.



49. SMALL GREEK ALABASTER ALABASTRON

Slender, somewhat elongated body with broad disc rim and pronounced ridge encircling upper part of body, tapering to a rounded base. Ex coll. George R. Francoeur, Bloomfield Hills, MI., USA, acq. from Charles Ede Ltd., London, catalogue 162, May 1996, no. 46
H. 10,5 cm. Chip at lip restored, otherwise intact.

6th cent. BC

€ 2.500



50. ATTIC BLACK FIGURE LEKYTHOS, ODYSSEUS

Small lekythos with a famous scene from Homeros, Odysseia book 10 showing the Trojan hero Odysseus, king of Ithaka, gesticulating before the seated 'sorceress' Kirke/Circe, daughter of Helios, because she had bewitched three of his companions into half wild boar half human with tail. Alternating lotus flowers and buds on shoulder, mouth, handle and lower part painted black.

Ex priv. coll. P.v.R. 1992-2012, inherited P. G., Netherlands.

H. 11,5 cm. Intact.

Beginning of 5th cent. BC. Extremely rare for subject

€ 5.000



51. ATTIC BLACK FIGURE LEKYTHOS, SATYR

Body decorated with scene of satyr walking to the right, looking back, inbetween female figure of maenad (?) seated on a folding chair set in vines; alternating lotus buds and flowers on shoulder and line with dots above; mouth, handle, lower part of body and of base painted black.

Ex priv. coll. P.v.R. 1992-2012, inherited P. G., Netherlands.

H. 11,9 cm. Intact

5th cent. BC, c. 470 BC

€ 2.250



52. ATTIC WHITE GROUND LEKYTHOS

Body decorated in white ground with two rows of closed palmettes set sideways, band of chequerboard pattern on shoulder, small stripes around base of neck; mouth, handle, lower part of body and base painted black. Ex priv. coll. P.v.R. 1992-2012, inherited P. G., Neth.

H. 15, 3 cm. Intact.

c. 475-450 BC

€ 2.000

Cf. CVA Heidelberg 4, pl. 1516/1 & 4



53. ATTIC BLACK FIGURE LEKYTHOS

Elegant lekythos, body on disc foot, painted black with nice full gloss, reserved parts at underside foot and shoulder, inside handle, neck and concentric band on top of mouth; shoulder decorated with tiny palmettes, ring of stripes at base of neck. Ex coll. G.B., Netherlands, acq. from J. Haering, Freiburg 2009; before, priv. coll. Biel Switzerland.

H. 13.4 cm. Intact.

Greek, c. 480 - 450 BC

€ 3.950



54. BOEOTIAN TERRACOTTA 'PAPPADES' FIGURE

Solid, hand-made flat body of a female figure with short arms stretched out, long neck and bird-like beaked face, wearing small flaring polos with large voluted curl on her head; dotted, striped and wavy decoration in black all over his figure. Light orange brown clay.

Ex priv. coll. H.M., Canada, acq. 2007 (with statement).

H. 17,4 cm. Chip from the back, otherwise intact.

6th cent. BC, c. 580 - 550 BC

€ 2.250

Cf. R.A. Higgins, Catalogue of the Terracottas in the British Museum, London repr.1970, Vol. I, no. 775, pl. 104; Robert A. Lunsingh Scheurleer, Grieken in het Klein, Allard Pierson Museum 1986, no.13



55. BOEOTIAN TERRACOTTA SEATED 'GODDESS'

A large statuette of seated female figure with flat, thin body, stylised arms shaped as small stumps, long neck with three long thick strands of hair falling onto her shoulders, onto nape of her neck and onto the backrest of her chair; head consisting of a large nose, eyes indicated in black, mouth and chin absent, polos with voluted curl on top; decoration of hair and dress in black paint. Ex priv. coll. O. M. Pessac, France, acq. from Rossini Paris 2016; thence Galerie Tarantino, Paris, with restoration report of Atelier Bresson. Traces of old labels.

H. 18,5 cm. Some repair at rear leg of chair

Boeotia, first half 6th century BC

€ 7.500

Cf. R.A. Higgins, Catalogue of the Terracottas in the British Museum, London repr.1970, Vol. I, no. 767, pl. 101;



56. EAST GREEK TERRACOTTA MODEL OF ANTEFIX

Fragment of a model of a temple front with plain roof; front with relief decoration of large palmette with volute lotus flowers and a band of meanders below; part of roof broken off.

Ex Frank Sternberg, Zürich, Switzerland 1970s; Musée d'Art Classique de Mougins, France, acq. from Christie's NY 2007.

Dim. 17,5 x 26 cm.

6th cent. BC

€ 4.500

Publ. M. Merryon (ed.), Mougins Museum of Classical Art, Mougins, 2011, p. 64, fig. 22



57. HELLENISTIC BRONZE PILOS HELMET

Conical shape from hammered bronze, groove at lower part creating a broad rim, at either side two small holes above groove for attachment of chin strap, popular as infantry helmet.

Ex coll. A. Gutmann (1944-2001), Berlin, (inv. AG 408) acq. 1991; coll. A.B., from ArtAncient 2016.

H. 23,5 cm. Blue green patina, heavily restored, reinforced at inside.

4th-3rd cent. BC

€ 17.500



58. BOEOTIAN TERRACOTTA

Large figure of a woman standing frontally on high square base, with her arms alongside, dressed in girdled peplos with straight vertical folds, her right leg slightly bent forward, completely covered with white slip; large rectangular opening at reverse. Red band on front of base.

Ex priv. coll. Wagelaar, Bergen, Netherlands, 1990s - 2000s

H. 34 cm. Intact. Mounted on wooden stand.

5th cent. BC

€ 4.250

Cf. P. G. Leyenaar-Plaisir, Les Terres Cuites Grecques et Romaines, I, Leiden 1979

SOUTH ITALY



59. AOULIAN RED FIGURE HYDRIA, VARRESE PAINTER

Side A shows a scene of a woman dressed in a chiton, holding palmbranch in her right hand, a cista and mantle in her left, walking to the right towards a naked young man looking back while holding a wreath with fillet and mantle; dotted fillet inbetween. Large palmette beneath vertical handle, wave pattern below, half volute at either side.

Ex priv. coll. A.de M., Brussel before 1970, hence Polak Works of Arts, Amsterdam 2013.

H. 35,5 cm. Intact. Details in added white paint.

4th cent., 360-340 BC

€ 7.500

Cf. A.D. Trendall/A. Cambitoglou, The Red-figure Vases of Apulia, vol. I,

Oxford 1978 pp. 335-356, pls. 108-114



60. PAESTAN RED FIGURE OINOCHOE, NAPELS 1778

Red figure 'Dionysiac' scene of naked young man with thyrsus staff and wreath leaning on a shield towards woman seated on a rock, who looks back at him and dressed in long dotted chiton with panther skin, holding thyrsus staff. Large palmette between half volutes beneath vertical band handle, trefoil mouth; details in added white, yellow and red. Ex priv. coll. A.de M., Brussels before 1970, hence Polak Works of Arts, Amsterdam 2013.

H. 27,7 cm. Intact, some paint flaked off at rim of mouth.

4th cent. BC, 330-320 BC. Painter of Naples 1778

€ 7.000

Cf. A.D. Trendall/A. Cambitoglou, *The Red-figure Vases of Paestum*, vol. II, Oxford 1982



61. APULIA, SMALL RED FIGURE BELL KRATER

Red figure decoration on side A of a leopard standing in attentive posture to the left, body dotted, ears straight up, tail raised, half volutes at either side, large white bordered red roundel before him, ivy leaf between three berries in added white in upper left and right of scene, window(?) above; side B with lady seated on rock to the left, holding a wreath in her right and an alabastron in her left hand, white bordered red roundels and white ivy leaf with berries at either side above and before her; palmette beneath the horizontal handles.

Ex priv. coll. Groeneveld, Amsterdam, collected late 19th cent., inherited by descent, Netherlands, 1990 - 2008

H. 17,5 cm. Intact

4th cent. BC

€ 3.500



62. APULIAN RED FIGURE LIDDED OINOCHOE

Body decorated with female head 'en profile', wearing a radiated wreath and her hair in an ornate saccos in added white and yellow colors; large palmette under the handle, which formed into a 'Herakles knot', laurelband around neck; lid with two female heads 'en profile' alternating with a palmette. Ex German priv. coll. 1960s - 1990s, hence Bonhams London 2013 and acq. from Bonhams London 2022.

H. 18,5 cm; ink number '129' on the underside of base and of lid.

4th cent. BC, 340 - 330 BC

€ 4.500



63. TEANO WARE DISH

Completely black glazed circular dish on short ring foot; inside decorated in added white paint of small band of ivy leaves and an inner band of wave pattern around band of stamped designs and an omphalos, three bands of stamped designs within red lines in field.

Ex priv. coll. Groeneveld, Amsterdam, collected late 19th cent., inherited by descent, Netherlands, 1990 - 2008

Diam. 20,5 cm. Intact

c. 300 BC

€ 1.100



64. DAUNIAN FUNNEL KRATER

Globular body and funnel-shaped mouth, two vertical handles and two plastic animal heads on shoulder, decorated in red and black with several horizontal bands, in handle zone on either side two panels with squares, divided by animal heads. Ex private coll. G.B., acq. from gallery Stormbroek, Netherlands 2003

H. 22.5 cm. Some wear.

South Daunian, Subgeometric IIA-B, 6th-5th cent. BC

€ 2.700

Cf. D. Yntema, *The Matt Painted Pottery of Southern Italy*, Thesis Vrije Universiteit, Amsterdam 1985, p. 367, fig. 249 var.



65. DAUNIAN TERACOTTA KYATHOS

Shallow bowl with broad and high arching and looped handle with applied disc 'eye' knobs imitating rivets and stylised 'animal head' with large pointed horns on top, decorated with geometric patterns in umber, black and red paint. Used as a ladle for dipping diluted wine from larger mixing bowl.

Ex priv. coll. P.v.R. 1992-2012, inherited P. G., Netherlands.

H. 15 cm; diam. rim 15, cm. Handle repaired

550 - 450 BC

€ 2.250



66. LARGE DAUNIAN OINOCHOE

Rounded body with decoration with central broad band between red lines with frieze of four diagonally striped chequered patterns, broad bands above and below; high arching and looped handle with applied disc 'eye' knobs from rim of large mouth to halfway body. Ex priv. coll. P.v.R., 1992-2012, hence by descent coll. P. G., Netherlands.

H. 21 cm. Intact

6th-5th cent. BC

€ 2.000

**67. DAUNIAN OINOCHOE**

One-handed jug for wine or water, decorated with bands; broad band handle from halfway to mouth. Ex priv. coll. M.Z., Netherlands, 1990, acq. from Sotheby's Amsterdam 1990, lot 6393

H. 10 cm, handle incl. Intact

6th-5th cent. BC.

€ 975

**68. DAUNIAN DOUBLE ASKOS**

Double askos decorated with geometric patterns in red, brown and black of bands, lines, verticals and diamonds; horizontal handle between two trumpet-shaped mouths Ex priv. coll. P.v.R., Netherlands, 1992-2012, hence by descent coll. P. G., Netherlands.

H. 9 cm. w. 15,5 cm. Intact, tiny chip from both mouths

c. 500 BC

€ 1.875

**69. TARENTINE GILDED TERRACOTA ANIMAL RELIEF**

Applique fragment with combat scene of lion attacking winged lion-griffin from behind, grabbing its rear with its teeth, while griffin turning back its head and is trying to escape. Beige clay, mould-made, gilded. Ex priv. coll. F.Z., Netherlands, acq. from J.D. Cahn, Basel, Tefaf 2007

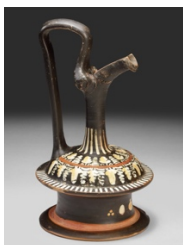
Dim. 5,2 x 8 cm. Mounted on Perspex.

4th cent. BC, c. 350 - 320 BC

€ 10.000

This type of mould-made terracotta appliques probably served as decoration for funerary furniture

Cf. K. Schefold, meisterwerke Griechische Kunst, Basel 1960, p. 266, VII 354

**70. GNATHIAN EPICHRYSIS**

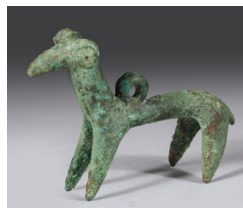
Reel-shaped body with high handle curving above to beaked mouth, small head applique at either side; added decoration of vertical stripes in white at lower part of neck, shoulder decorated with two opposite rows of grapes and tendrils in white and yellow, divided by central line in red; row of white stripes below. Ex priv. coll. J.H.S., Amsterdam 1976

H. 17 cm; beak repaired, small chip from base, otherwise intact

4th cent. BC

€ 1.450

ETRURIA

**71. VILLANOVA BRONZE FIGURE OF A RAM**

Standing slightly backwards on four tapering legs, short tail, long neck and stylized head with curled horns; ring behind neck. Ex priv. coll.

E.F.M. B-H., Netherlands, acq. from Rhea Gallery, Zürich, Tefaf 1999.

Dim. 6 x 8,75 cm. Green patina

8th cent. BC

€ 3.500

**72. VILLANOVA BRONZE HORSE CHEEKPICE**

Cheekpiece from a horsebit cast in the shape of a stylized horse with tall mane to give it a crested effect, ending in small ring at its back, the legs ending in a ring. Ex priv. coll. E.M.F. B., Netherlands, acq. from Royal Athena Galleries, New York, March 19, 1999.

Dim. 7 x 8,7 cm. Mounted on perspex stand, fine green patina.

8th cent. BC, c. 750-700 BC.

€ 7.750

Publ. Royal Athena Galleries, Art of the Ancient World, 1991, no. 42;

Cf. I. Jucker, Italy of the Etruscans, Israel Museum, Jerusalem 1991, 102

**73. VILLANOVA BRONZE VOTIVES**

Bronze set of five funerary votives. Large shield umbo in two parts; quadruple spectacle fibula, serpentine fibula, armlet/bracelet and bronze ring with iron decoration. Ex Sotheby's Amsterdam 1989.

Sizes varying: 3 cm - 22 cm.

8th cent. BC

€ 4.875

Cf. M. Comstock/C. Vermeule, Greek, Etruscan and Roman Bronzes, Boston 1971, nos. 333-4; H.A.G. Brijder e.a., De Etrusken, Amsterdam 1989, p.51, afb. 33

**74. VILLANOVA BUCCHEROID IMPASTO AMPHORA**

Greyish brown black impasto, body with two large incised linked double spirals between band of five incised verticals; broad strap handles from mouth to shoulder. Ex priv. coll. P.v.R., Netherlands, 1992-2012, hence by descent coll. P. G., Netherlands.

H. 14 cm. Intact, tiny chip from mouth

Late 8th-early 7th cent. BC

€ 2.250

Cf. I. Jucker, Italy of the Etruscans, Israel Museum, Jerusalem 1991, no. 219



75. VILLANOVA BUCCHEROID IMPASTO OINOCHOE

One-handled jug, shoulder decorated with incised pendant triangles, two parallel incised horizontals at base of flaring neck; vertical handle in form of stylized animal head with two pronounced horns, small ring foot, flat underside. Ex priv. coll. P.v.R., Netherlands, 1992-2012, hence by descent coll. P. G., Netherlands.

H. 13 cm; intact, two tiny chips from rim, smoothed surface 8th cent. BC.

€ 1.750

Cf. I. Jucker, *Italy of the Etruscans*, Israel Museum, Jerusalem 1991, nos. 175 for decoration, and 183 for handle



76. ETRUSCAN BLACK FIGURE PONTIC CHALICE

Cup on stemmed flaring foot, underside reserved; body decorated with scene of swans fluttering to the left with widespread wings; offset base of cup decorated with band of rays. Black paint fired red all over, added red paint on wings fired grey; stem hollow, tapering to base of cup.

Acq. from Royal Athena Galleries, New York 2013.

H. 9,2 cm. Small chips of rim restored, burned to red, otherwise intact. 6th cent. BC

€ 4.500

Cf. L. Hannestad/A. Drukker, *The Followers of the Paris Painter*, Copenhagen 1976, p. 72, no. 111, pl. 45b



77. ETRUSCAN STEMMED DISH.

Tondo decorated with scroll and dot pattern in umber red and white slip, circumscribed by plain band with a cross-hatch decorated flattened rim, underside with rays emanating from the top of stemmed foot. H. 14 cm. Diam. 23.3 cm. Repaired with minor restoration.

Ex private coll., Munich, Germany, acquired before 1990.

c. 6th cent. BC

€ 2.500



78. ETRUSCO-CORINTHIAN TERRACOTTA MONKEY

Vase in shape of monkey seated with crossed 'feet', raising its right paw to its muzzle and its left to its ear; aperture on top of head, decoration worn. Ex priv. coll., England, 2006 (Bonhams)

H. 11,3 cm. Buff clay

2nd - 3rd quarter of 6th cent. BC

€ 3.750

Cf. A. Kozloff, *Animals in Ancient Art from Leo Mildenberg Collection*, Cleveland 1981, no. 95; Jucker, *Italy of the Etruscans*, The Israel Museum, Jerusalem/Mainz 1991, as no. 290, described as Etrusco-Corinthian and probably made in Cerveteri (acc. to Jucker)



79. ETRUSCAN TERRACOTTA EQUESTRIAN RELIEF

Fragment of relief group of two horseriders galloping to the right, one rider raising his arm for grasping the manes of the horse, reins in relief, hanging loosely around necks of both horses, traces of red paint. Probably Caeretan. Ex priv. coll. F.Z., Netherlands 2006.

Dim. 15,6 x 12 cm. Mounted. Orange-brown clay

Late 6th - early 5th cent. BC.

€ 5.975

Cf. *Die Welt der Etrusker*, exhib. cat., Berlin 1988, B6 1.13-14



80. ETRUSCAN BRONZE FIGURE OF HERAKLES

Standing naked except for his lion's skin, forepaws knotted around his chest, rest wrapped over his left shoulder and bent arm, his right one is raised for brandishing a now missing club. Ex priv. coll. A.B., Netherlands, acq. from Christies, London 1999.

H. 12 cm. Dark green patina. Mounted and intact.

5th - 3rd cent. BC

€ 7.750

Cf. I. Jucker, *Italy of the Etruscans*, Israel Museum, Jerusalem 1991, no. 145; H.A.G. Brijder e.a., *De Etrusken*, Amsterdam 1989, fig. 156



81. ETRUSCAN RED FIGURE BEAKED OINOCHOE

Decorated with satyr and maenad scene, naked satyr with tail offers maenad a white beaded necklace between large florals; on cylindrical neck a woman dressed in peplos, an apple(?) in outstretched arm between half voluted palmettes; band handle with thumb rests.

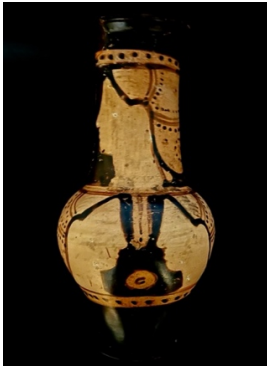
Ex priv. coll. J.H.S., Netherlands 1976 - 1980s

H. 27,5 cm. Intact.

4th cent. BC. Torcop Group

€ 4.750

Cf. J.D. Beazley, *Etruscan Vase Painting*, New York 1976, p.169, pl.36 var



82. ETRUSCAN RED FIGURE BEAKED OINOCHOE

Body decorated with two facing female heads without facial details, their hair dressed up in a dotted sakkos with tip of hair sticking out, sash and phiale inbetween; same type of female head on neck, half palmette before; dotted band above and below scenes; band handle. Ex priv. coll. Prof. Dr. A.B., Netherlands, 1990s-early 2000s. H 27,7 cm; Intact, small chip from mouth.

4th cent. BC. Torcop Group, Populonia Painter

€ 2.500

Cf. J.D Beazley, *Etruscan Vase Painting*, New York 1976, p.169, pl.38,4; M.A. del Chiaro, *Studi Etruschi* 28, 1960, pp.142ff



83. ETRUSCAN GENUCILIA DISH

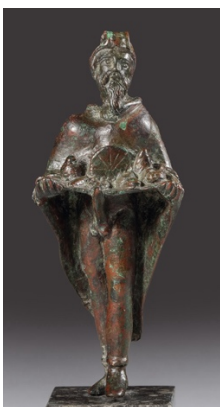
On low stemmed foot, upperpart decorated in black with four petalled star divided by three-dotted cluster, wave pattern around. Ex priv. coll. P.v.R., Netherlands, acq. from Opal House, Delft 1996, thence by descent coll. P. G., Netherlands.

H. 6 cm; diam. 14,7 cm. Intact
c. 400-350 BC

€ 975

Cf. I. Jucker, *Italy of the Etruscans*, Israel Museum, Jerusalem 1991, no. 316

ROME



84. ROMAN BRONZE PRIAPUS FIGURE

Son of Zeus, god of virility and fertility, his tunica open at front showing his everlasting erection, cloth with fruits in his hands, supported by his penis. Ex priv. L.J. Jansen, Netherlands, Gorny & Mosch, München 2007, hence priv. coll. H.v.H., Netherlands.

H. 9,5 cm. Green and red brown patina. Mounted
1st - 2nd cent. AD

€ 17.500

Cf. *The larger statues of this type were used in Roman gardens as scarecrow, his usually enormous penis as a threat for thieves*



85. ROMAN BRONZE MERCURIUS STATUETTE

God of trade and messenger of the gods, standing naked, his head with short curly hair turned slightly to the left, his mantle falling from his left shoulder over his left arm, his right arm alongside his body in which he held a now missing object, probably a purse or coin bag. His head is slightly turned to the side and his body having a slight curve, which is showing movement in the figure.

Ex priv. coll. L.J. Jansen, Netherlands, before 1995, Gorny & Mosch, München 2012, hence priv. coll. H.v.H., Netherlands

H. 11,7 cm. Nice red and green patina. Mounted

1st - 2nd cent. AD.

€ 25.000

Cf. *Oriental Art Auctions/art 600536*

Mercury was the god of trade and industry, whose principal shrine in the city of Rome was at the Circus Maximus. Mercury is often modelled with a coin purse in his right hand, holding a caduceus in his left hand, while a mantle is draped from his left shoulder.



86. ROMAN BRONZE FIGURE OF A PRIESTESS

Standing female figure of a priestess, wearing diadem, veiled and dressed in long robe with himation and mantle falling over her left shoulder onto her back, her right arm raised for holding an object (now missing), as in her left halfway her body grabbing a now missing object, her right foot visible.

Ex priv. coll. J. W. London, acq. Late 1960s-early 1970s, coll. J.v.H., Netherlands, inherited H.v.H. in 1977.

H. 13,2 cm. Lovely red brown patina. Mounted

1st - 2nd cent. AD

€ 18.500



87. ROMAN BRONZE SEATED DOG

Slender and graceful with short neck, rather large pointed head with big eyes, ears lay flat back, slender tail curls up to the dog's right, raising its left front leg as if begging for attention; set on rectangular base. Dark green patina, paw of frontleg lacking. Ex priv. coll. M.v.S., Netherlands, formerly Mariaud de Serres, Paris 1980s.

H. 5 cm. Mounted on yellow marble stand.

1st cent. AD

€ 12.250

Lit. A.P. Kozloff, *Animals in Ancien Art, From the Mildenberg Collection*, Cleveland 1981, p. 194-5, nr. 182 (standing)



88. BRONZE WINGED AMOR APPLIQUE

Wearing a twisted necklace with bulla pendants around his neck, his hair dressed up in top-knot with plait going down at the back of his head. Dim. 5,9 x 5,7 cm. Dark green and reddish patina.

Ex priv. coll. H.v.H., Netherlands, acq. from priv. coll. J. C., England 2014 1st - 2nd cent. AD

€ 4.750



89. ROMAN BRONZE OINOCHOE

One-handed beaked jug with ovoid body, and curved handle rising high above mouth ending on rim in shape of a duck's head both ways, thumb rest on top in form of curved palmette leaf, incised floral decoration on handle terminating halfway body in a theatermask with open mouth in high relief; underside foot with four relief rings.

Ex priv. coll. prof. A. B., Netherlands, acq. from David Cahn, Basle 2002; hence priv. coll. M.v.S. bought from Venduehuis, The Hague 2022.

H. 18,8 cm. Green patina.

1st cent. AD

€ 5.500



90. ROMAN BRONZE MIRROR CASE

Circular mirror box consisting of two large hinged discs with raised edges and outer surface decorated with one large and one small concentric circle in relief; both discs have a double omega-shaped handle at one side, hooked in a looped applique of a theatre mask, and a simple hinge at the other side; inner surface with polished silvering.

Ex priv. coll. Prof. Dr. A.B., Netherlands, bought at Tefaf 2007 from Kunsthandel Mieke Silberberg, acq. from Christie's London 2006.

Diam. 12 cm without handles, 19 cm with handles

1st - 2nd cent. AD

€ 4.000

Cf. J.W. Hayes, *Greek, Roman and Related Metalware in the Royal Ontario Museum, Toronto 1984*, pp. 190-193, nos. 321-324 check



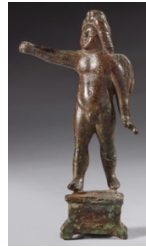
91. ROMAN BRONZE WINGED AMOR

Chubby figure of naked Amor, god of love, moving forward with his wings wide spread; his left arm stretched out, probably for holding a now missing torch, his hair with a braid on top. Ex priv. coll. L. J., Netherlands, acq. from Gorny & Mosch, München 2006.

H. 14,8 cm. Moss green patina. Mounted

2nd - 3rd cent. AD

RESERVED



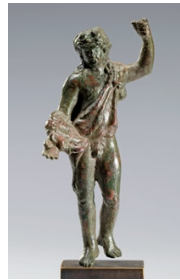
92. ROMAN BRONZE WINGED AMOR FIGURE

Walking naked with his right leg forward, his long hair dressed up and falling on his back, stretching his right arm for holding a burning torch to encourage love. Ex priv. coll. J.W., London, acq. late 1960s-early 1970s, English artmarket, priv. coll. J.v.H., Netherlands before 1977, inherited H.v.H., Netherlands.

H. 9,6 cm. Brown and green patina. Sockle not belonging.

2nd - 3rd cent. AD

€ 3.250



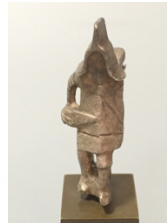
93. ROMAN BRONZE FIGURE OF HERCULES

Standing with his weight on his right leg, holding his left arm raised for holding a now missing spear, looking down at his right hand, his lions' skin hanging diagonally over his body from his left shoulder to lower part of his right arm. Ex priv. coll. M.v.S., Netherlands, acq. from AAG, Amsterdam 2018; former priv. coll. L.J., Netherlands, 2003 - 2017

H. 9,4 cm. Green and red patina. Mounted

1st cent. AD

€ 5.500



94. SILVER FIBULA OF A MURMILLO GLADIATOR

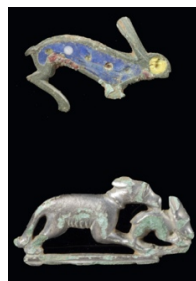
Left leg forward, large rectangular shield, short sword in right hand, large helmet with plume crest and ornate 'grill' face visor on his head.

Pin missing. H. 5 cm. Mounted. Rare. Ex priv. coll. Stobbe, Netherlands.

1st - 2nd cent. AD

€ 3.500

The Murmillo gladiator usually fought with the Thraex or hoplomachus



95. TWO ROMAN BRONZE FIBULAE

Bronze jumping hare with large upright ear, body decorated in blue with white dots, red lower part, and face in yellow enamel inlay; Silvered bronze dog chasing and catching a small rabbit. Acq. from 'De Zwaan', auctionhouse Amsterdam 2022, priv. coll. M.v.S., Netherlands.

Both fibulae missing their pins; foreleg from hare broken off.

L. hare 3,5; l. dog 4 cm. Mounted

2nd - 3rd cent. AD

€ 1.250

**96. ROMAN SILVER FOOT**

Decorated with winged Medusa head, part of silver cup.

Ex Galerie Derive, Leiden 2000, acq. before 1980

H. 4 cm. Mounted.

1st -2nd cent. AD

€ 4.500

**97. ROMAN GLAZED SKYPOS**

Grey green glazed cup on low broad foot with two square-shaped handles with indents for thumb; relief decoration of foliage as oak leaves on both sides of body. Ex priv. coll. J.A.Z., acq. from Gallery Stormbroek, Netherlands 1999

H. 7 cm. Intact

1st cent. AD

€ 2.750

**98. ROMAN TERRACOTTA VOTIVE LEG**

Large terracotta left leg, dedicated as a votive to Aesclepius, the god of medicine, for healing. Ex priv. coll. J.C. Leonard, Belgium 1960s.

H. 24 cm. Leg repaired and foot partly restored. Mounted on black stand.

1st-2nd cent AD

€ 3.000

**100. GREEK TERRACOTTA STANDARD LAMP**

Wheel made, round and flattened bowl with raised, conical tube in the centre; projecting shovel-shaped nozzle, black-glazed apart from side and underside; spiral grooves from wheel on base.

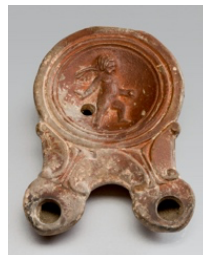
Ex coll. L.v.R., Netherlands, 1970s-90s

L. 10,8 cm, w. 8,6 cm; fire-crack and small chip rim.

5th cent. BC

€ 575

Cf T. Szentleky, *Ancient Lamps*, Chicago 1969, p. 31, no. 12

**101. ROMAN DOUBLE-WICK TERRACOTTA LAMP**

Circular body, discus decorated in relief with winged Amor running to the right, two voluted nozzles. Orange clay, handle missing.

Ex priv. coll. L.v.R., Netherlands, 1970-1990s.

Dim. 12 x 8,3 cm

1st cent. AD

€ 1.250

**102. BYZANTINE BRONZE STANDARD OIL LAMP WITH LID**

Pear-shaped body with circular nozzle, handle with openwork scrolls and central volute palmette; dome-shaped lid decorated with incised grooves, double knob on top, small square hole in base to stick the lamp on a tripod stand. Ex priv. coll. K.V., Germany, acq. before 2000

Dim. 9,8 x 20,4 cm. Nice dark green patina

6th - 8th cent. AD

€ 5.500

Cf. H. Menzel, *Antike Lampen*, Mainz 1969, Nr. 689, var., Abb. 91,2

**103. FRAGMENT OF GYPSUM XP LAMP MOULD**

Male mould for upperpart of a North African oil lamp with a central relief of a XP monogram, a Christogram, as the symbol of Christ being the two first Greek letters of his name; around, a band of alternating appliques of concentric circles and palm leaves. Ex coll. Rudolf Rack, Bad Neuheim 1950- 2010. Gorny & Mosch Auktion 296, München 2023, lot 102. Typus Hayes II.

L. 16,5 x 12 x 3,5 cm.

North Africa, 4th-5th cent. AD

€ 1.875

Cf. for lamp H. Menzel, *Antike Lampen*, Mainz 1969, Nr. 606, Abb. 77,11

LAMPS

**99. PHOENICIAN /CANAANITE TERRACOTTA LAMP**

Shallow saucer lamp, earliest type; open, round bowl, beak-like wick-rest formed by pinching up the rim. Ex priv. coll. prof. P.M.S. Jones, UK, before 2002. L. 17,7; diam. 18,5 cm. Orange clay, fired black in places at underside. Small chip from rim, otherwise intact.

2nd mill. BC, c. 1600 - 1400 BC

€ 975

Publ. Peter Jones, *Collecting Ancient Lamps*, Swansea 2002. Cf Y. Israeli/U. Avida, *Oil-Lamps from Eretz Israel, Jerusalem 1988*, pp. 9-10 cat. no.1; T. Szentleky, *Ancient Lamps*, Chicago 1969, p. 21 no. 1

GLASS

**104. LARGE ROMAN ONE-HANDLED FLASK**

Free blown, rounded body with spiral trail, angular strap handle from neck to shoulder, looped beneath rim; concave base; rim of mouth turned out and over.

Ex priv. coll. H. v. H, Belgium, acq. from J. Schulman BV, Amsterdam, List 214, 1978, no. 78

H. 19 cm. Intact, some iridescence.

1st cent. AD

€ 5.000

Cf. Ancient Glass, Bomford Collection, Bristol Museum 1976, 59

**105. ROMAN BLUE UNGUENTARIUM**

Globular body, tall flaring neck ending in everted rim; flattened and slightly indented base. Ex priv. coll. A. Niemeyer, Netherlands, priv. coll. C.M., Netherlands 1999

H. 11,4 cm. Intact

1st cent. AD

€ 4.750

Cf. Ancient Glass, Bomford Collection, Bristol 1976, no. 54

**106. ROMAN BLUE UNGUENTARIUM**

Globular body, small neck ending in everted rim; flattened and slightly indented base. Ex priv. coll. T.M., Netherlands 1999

H. 7,8 cm. Intact

1st cent. AD

€ 4.500

**107. ROMAN MANGANESE SIDONIAN AMPHORISKOS**

Mould-blown, translucent amethyst ovoid ribbed body, short neck with everted rim, trailed-on twin handles from shoulder to one third of neck. Ex priv. coll. C. M., Netherlands 2001

H. 8,5 cm. Intact. From Sidon

1st cent. AD

€ 5.000

Cf. A. Oliver jr., Ancient Glass, Carnegie Museum, Piitsburg, no.59

**108. ROMAN AMBER CUP OR ACETABULUM**

Hemispherical body on pad base, slightly flaring to rounded rim with pinched-out ridge or tubular flange below.

Ex priv. coll. F. of Surrey, UK 1960s; priv. coll. C.M., Netherlands, acq. 2010.

H. 4,7 cm. Tiny chip from base, otherwise intact.

1st cent. AD

€ 4.250

Cf. Oppenländer, RGM, Köln 1974-5, p. 108, no. 295; H.v. Rossum, Roman and Early Byzantine Glass, 2009, p. 20; Laméris, no. 63

**109. AMBER 'PILGRIM' FLASK**

Mould-blown body decorated with honeycomb pattern on both sides, small neck with wide funnel-shaped rim and applied white handles.

Ex coll. Donald Brown, Boston, USA, formed in 1960s; Bonhams 2014.

H. 12 cm. Intact. Some iridescence

2nd - 3rd cent. AD

€ 6.750

**110. ROMAN YELLOW AMPHORISKOS**

Yellow oval body with flattened base, cylindrical neck, everted ground rim, two vertical blue handles from shoulder to neck under mouth.

Ex priv. coll. C. M., Neth., acq. from Archea 2002.

H. 10 cm. Intact. Eastern Mediterranean, Judea or Palmyra

1st cent. AD

€ 6.000

Cf. Y. Israeli, Ancient Glass in the Israel Museum The E. Dobkin Collection, Jerusalem 2003, no. 337

**111. SEA-GREEN JANIFORM SPRINKLER**

Body blown in bipartite mould in shape of two heads of a youth back-to-back, short neck constricted, broad slight collar mouth, pinched-out base. Ex Cahn, Basel; coll. P. Arts, Netherlands before 2000; thence priv. coll. C.M., Netherlands, acq. Bonhams, London 2001.

H. 10,5. Intact

3rd cent. AD

€ 7.500

Pub. P.L.W. Arts, Collection of Ancient Glass, 500 BC-500 AD, Lochem 2000, no. 61

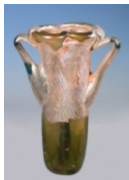
**112. GREEN ONE-HANDLED GLASS**

Slightly flaring body, tall neck, broad flaring mouth, ring beneath, band handle from shoulder to rim of mouth. Ex priv. coll. E., Rotterdam 1960s-1970s, acq. from Galerie M. de Vree, Rotterdam; hence priv. coll. M.v.S., The Hague bought from Wiegersma, Utrecht 1980s.

H. 13 cm. Intact

3rd-4th cent. AD

€ 1.975

**113. GREEN GLASS DOUBLE BALSAMARIUM**

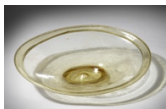
Green body mould-blown to produce diagonal fluting and pincered to form double-tube; two blue folded handles.

H.12.3 cm. One side of body covered with silver iridescence.

Ex coll. M.v.S., Netherlands 2008.

3rd - 4th cent. AD

€ 4.250

**114. YELLOW GREEN FOOTED OVAL DISH**

Rim folded outwards and over, shallow dish to form a broad, thickened rim, central knob and separately attached oval foot with faint tooled decoration on the exterior. Originally priv. coll. Perthshire 1900-1965, hence coll. of the Estate of the late Ellen Broun; acq. from Bonhams London, 2022 lot 114.

L. 19,5 cm. Intact

5th - 6th cent. AD

€ 4.500

Cf. For tooling of the foot: D.B. Harden, Roman Glass from Karanis, Oxford 1936, no. 17

JEWELLERY

**115. EGYPTIAN FAIENCE NECKLACE**

Consisting of small multicoloured faience beads interspersed with 15 blue faience amulets showing baboons, fruits and floral elements alternating. Ex priv. coll. G. Metz, Sweden 1990, acq. from Harmakhis, Brussels; originally from Harold Clements, Crest Private Museum, Hemel Hempstead, Hertfordshire, UK 1939

L. 46 cm. Reassembled and restrung with modern 18 carat gold clasp. New Kingdom, 18th Dyn., c 1550-1292 BC

SOLD

**116. MESOPOTAMIA. PAIR OF DUCK PENDANTS**

Two small marble heads of a duck with inlay of circular bronze eyes for original inlay; top of heads pierced for wearing. Ex priv. coll. H.v.H., Netherlands, acq. from Mayfair Gallery, London early 1990s.

H. 3 x 3,4 cm; mounted.

2nd - 1st mill. BC

€ 2.750

**117. EGYPTIAN GREEN FAIENCE SCARAB RING**

Finely detailed blue green faience scarab engraved with 'SA -Wadjet' a duck and a winged cobra 'Son of Wadjet', goddess of protection for Lower Egypt. Set in modern gold ring. Ex priv. coll. E.J. Stoel, Netherlands 1980s,

L. scarab :1,8 cm. Diam. ring: 2 cm.

New Kingdom, 18th-19th Dyn., c. 1580-1050 BC

€ 5.750

**118. EUROPEAN/GREEK BRONZE FINGERRING**

Ring formed from one length of bronze wire into four spirals, increasing in size towards the middle and decreasing towards the end. Very unusual design.

Ex priv. coll. M.v.S., Netherlands, acq. from Drouot, Paris 1986.

H. 1,8 cm; diam. 2 cm. Lovely dark green patina. Intact

8th-7th cent. BC

€ 500

**119. CELTIC BRONZE MINI TORQUE**

Consisting of slightly flattened circular ring with incised oblique stripes, tapering towards central opening with hooked terminals, flat knob on top. Ex priv. coll. B.B., Netherlands 1990s

Dim. 3,6 x 3,4 cm Green patina.

c. 500 BC

€ 450

**120. GREEK GOLD PAIR OF 'LEECH TYPE' EARRINGS**

Pair of earrings with filigrain decoration.

Ex priv. coll. P.F., Netherlands 2013.

H. 2,3 cm

6th - 5th cent. BC

€ 2.750

Cf. F.H. Marshall, Catalogue of Greek, Etruscan and Roman, British Museum repr. 1969, no.1593

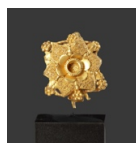
**121. HELLENISTIC PAIR OF GOLD EARRINGS**

Calve heads with garnet beads. Ex priv. coll. E.R., Netherlands, acq. from Royal Athea Gallery, New York 2004.

Diam. 2 cm.

4th cent. BC

€ 8.750

**122. GREEK GOLD EARRING**

Central rosette with heart-shaped leaves around in filigree.

Pin at the back. Ex priv. coll. H.J.A, UK, before 1975.

L. 2 cm.

5th -3rd cent. BC

€ 3.750

**123. GREEK GOLD EARRING**

Hoop is formed of coiled wires tapering to the end to be hooked into a loop, other end consisting of ornamental collar, head of ibex, small loop beneath, meant to wearing upside down. Ex priv. coll. F. Z., Netherlands, acquired from Blondeel, Belgium 1992

Hellenistic period, 4th-3rd cent. BC

€ 4.975

cf. F.H. Marshall, Catalogue of Greek, Etruscan and Roman, British Museum repr. 1969, no.786-7, pl. XXX; Higgins as above pl. 47



124. GREEK GOLD NECKLACE-ANTILOPE HEAD FINIALS

Chain consisting of 'figure of eight' loop-in-loop wires, alternating by spools, antelope-shaped finials. Ex priv. coll. P.F., Amsterdam 2013.

L. 28 cm. Small hook missing

Hellenistic Period, 4th - 3rd cent. BC

€ 2.000

Cf. H. Hoffman/P. Davidson, Greek Gold, Brooklyn Museum 1965, p.135-6



125. ROMAN PAIR OF GOLD EARRINGS

Openwork sheet-gold earrings in shape of openwork rosette with three pendants with a central garnet. Ex priv. coll. R.v.d.W., Netherlands before 2006, inherited.

H. 4,2 cm.

3rd-4th cent. AD

€ 1.850



126. ROMAN GOLD PENDANT

Reversed heart-shaped with three pearl inlays and three dangles, coiled; voluted ring at top. Ex priv. coll. W.K., Netherlands 2000-10.

H. 3,5 cm. Mounted.

3rd cent. AD

€ 1.850



127. ROMAN GOLD CAMEO PENDANT

Integrated ribbed loop, the oval shaped cell with radiating strokes to the flange border, the inset agate-onyx cameo with profile female bust to the left, fine detailed face, her wavy hair plaited and wound in a bun, style of Faustina Junior, wife Marcus Aurelius. Cameo reset in later gold setting. Ex priv. coll. C. M., London, UK; formerly in a private New York collection; acquired in the 1980s.

H. 3,6 cm. Weight 5,92

2nd - 4th cent. AD

€ 8.000

cf. F.H. Marshall, Catalogue of Greek, Etruscan and Roman, British Museum repr. 1969, for discussion



128. ROMAN GOLD RING

Dark orange cornelian stone engraved with a scene of seated goddess Fortuna with rudder at her feet and holding a cornucopiae in right raised hand, being wreathed by a winged god Mercury, the gobetween of the gods and humans, and a patron of the merchants. Ex coll.

Jacques Schulman BV, Amsterdam 1986. Setting modern.

1st - 2nd cent. AD

€ 7.000

=====#=====