

PAN AMSTERDAM – 2024

EGYPT - VARIA



1. WOOD STATUETTE OF MAN

Striding with left foot forward, arms alongside of his slender body, wearing white painted kilt, short braided black wig; all details as eyes, eyebrows, nose and mouth sculpted, traces of white and black paint; original wooden base gone. Provenance: Swiss private collection F.D.; with Alexander Ancient Art, 2013; with Cahn Basel, September 2005; before collection of Alfred Obrecht, Feldbrunnen, Switzerland.

H. 27 cm.

Old Kingdom, 6th dynasty, reign of Pepi II (circa 2250 BC)

POR

Cf. Julia Harvey, Wooden Statues of the Old Kingdom. A Typological Study (Leiden, Brill, 2001), 253, no. A70.



2. SMALL WOOD STATUETTE OF MAN

Standing frontally, feet next to each other, short straight wig on his head, dressed in short pleated kilt, his left arm originally bent, his right one to his body, hand pierced for holding sceptre or baton, traces of black paint.

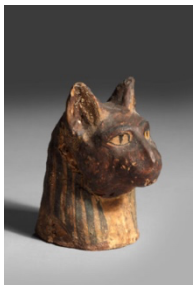
Ex German priv. coll. acq. c. 1990; thence Galerie Eberwein Ancient Art, Paris; 2016, thence German private collection H.P., acq. from the above on 22 June 2015. ALR certificate no S00102543 of 23-6-2015

H. 12,2 cm. Forefeet missing. On wooden stand.

New Kingdom, 18th Dyn., c. 1350 BC

€ 22.000

Publ. Galerie Eberwein, Katalog 2016, no. 17; ALR certificate 2015



3. SMALL CARTONNAGE MUMMY MASK OF A CAT.

Dark brown, expressive eyes, protruding ears, black striped wig.

Ex coll. D.M. 2003. Central flaring opening at the back.

H. 9,8 cm. Intact.

before 600 BC. Rare.

€ 12.500



4. GILDED MUMMY MASK

Polychrome cartonnage mask, made of layers of linen coated with gesso; the human skin of his youthful face, neck and prominent ears gilded, surrounded by a tripartite blue wig, decorated on top with a large black scarab, red sundisk in its legs, around a band with continuous figures of the four sons of Horus; large bust of falcon with widespread wings at the back and at the front a large winged sun disk with cobra at either side below; small frontal band with three cobras alternating with three lotus buds around his face, row of cobras below his face; large bust of a falcon with sundisk and a cobra at either side of his large ears.

Ex priv. coll. D. Sivasligil, Overijse, Belgium, thereafter sold at Nagel Auktionen, Stuttgart 2014, BRD.

Dim. 19 x 30 x 30 cm. On wooden stand, part of reverse deficient Roman period, 1st cent. AD

€ 15.500

Note: The use of gold or gold leaf was connected to the belief that the sun god Re, with whom the deceased hoped to be united, had flesh of pure gold, and to the fact that gold does not tarnish, therefore guaranteeing immortal life. Cf. S. Ikram/A. Dodson, The mummy in Ancient Egypt, Londo 1998, pp. 187-188, figs. 218-221.



4a. POLYCHROME PAINTED MUMMY MASK

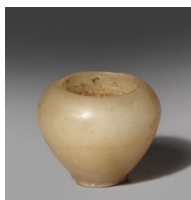
Cartonnage mask, striped wig with frontal striped band of reticulated or checkerboard pattern at either side of the lappets as well as above the hairband; between the lappets a broad collar is visible on the chest, displaying a decoration of lotus flowers, small circles or dots, and other elements, probably imitating strings of beads. Above forehead, a diadem or striped headband with a central sun disk; partly on the forehead and partly on top of the head the depiction of a vulture, its wings spread in a sign of protection, wearing the white crown of Upper Egypt as a representation of the goddess Nekhbet. A sun disk near the head of the goddess, carrying two round objects in her talons, probably shen signs, symbolising eternity, from which a ribbon runs to either side, mixing with the stripes on the lappets of the wig.

Ex Swiss priv. coll. F.D.; with Alexander Ancient Art, 2013; Gerhard Hirsch Nachfolger, Germany, Jan. 2006, lot 849; previously German priv. coll., acq. around 1975. With Art Loss Register certificate.

H. 43 cm.

Roman period, 1st cent. AD

€ 24.000



5. SMALL ALABASTER BOWL

Rounded body flaring to small circular foot, drilling rings inside, traces of kohl. Ex coll. J. B., Netherlands, 1999.

Dim. 3,8 x 4,4 cm. Intact.

New Kingdom, 18th Dyn., period of Tutmosis III, c. 1479 - 1425 BC

€ 1.250



6. ALABASTER LID OF A CANOPIC JAR

The lid in the form of the human-headed Son of Horus, Imseti, wearing a tripartite wig, decorated with a frontal uraeus, face modeled, no ears; all facial features and ears carved in shallow relief.

Ex priv. coll. J.J.M., Netherlands 1950-1992, inherited by H.W.S. Netherlands 2000.

Dim. 13,5 x 11,5 cm. Intact

New Kingdom, 20th dyn., c. 1237-1070 BC

€ 4.000



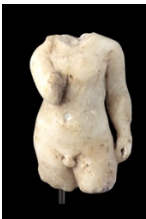
7. GREENISH AND REDBROWN FAIENCE CANOPIC LID

The lid in the form of the human-headed Son of Horus, Imseti, wearing a tripartite wig, decorated with a frontal uraeus, face modeled, no ears; large hole on top of head. Ex priv. coll. J.J.M., Netherlands 1950-1992, inherited by H.W.S. Netherlands 2000.

H. 8 cm. Surface worn, otherwise intact.

New Kingdom, 19th - 20th dyn., c. 1295-1070 BC

€ 1.750



8. MARBLE FRAGMENT OF HARPOCRATES STATUETTE

Naked figure of Harpocrates, tress of hair showing on shoulder, raising one arm to his mouth, the other alongside his body, hand pierced.

Ex Gallery Drees Archeo, Belgium 2007; formerly priv. coll., UK.

H. 12 cm. Mounted on black stand.

Alexandria, 1st cent. BC - 1st cent. AD

€ 3.750

EGYPT - BRONZES



9. EXCEPTIONAL LARGE BRONZE FIGURE OF OSIRIS

Mummiform figure of the god of the Underworld, standing with his arms crossed before his chest, holding the crook and the flail, wearing the Atef crown of Upper Egypt decorated with a long stretched uraeus, traces of gilding in the originally inlaid eyes.

Ex priv. coll. J.J.M., Netherlands 1950-1992, inherited H.W.S., Neth.

H. 52 cm. Retouched in places, underside base repair. Mounted.

Saite Period, 26th Dyn., c. 664-525 BC

POR

Cf. G. Steindorff, Catalogue of the Egyptian Sculpture in the Walters Art Gallery, Baltimore 1946, pls. LXVI, no 379 var; G. Roeder, Egyptische Bronzefiguren, Berlin 1956, Tf. I 25f and Tf. 27a-d var.



10. LARGE BRONZE FIGURE OF OSIRIS

Mummiform figure of the god of the Underworld, standing on square base, both of his hands before his chest sticking out of the mummy wrappings, in his right hand holding the flail above his left hand with the crook, cloak wrapped around him, wearing the Atef crown of Upper Egypt decorated with a long stretched uraeus and flanked by feathers and ram's horns, and wearing the ceremonial 'false' beard.

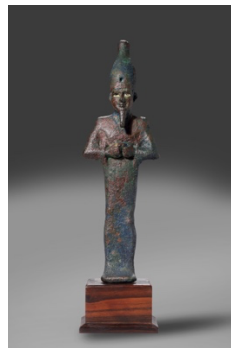
Ex priv. coll. J.J.M., Netherlands 1950-1992, inherited H.W.S. Neth.

H. 34,9 cm. Dark patina, upperpart of left feather broken off. Mounted.

Saite Period, 26th Dyn., c. 664 - 525 BC

18.500

Cf. G. Steindorff, Egyptian Sculpture, Baltimore 1946, pls LXVI-LXVII



11. BRONZE FIGURE OF OSIRIS

Mummiform figure of the god of the Underworld, standing with his arms opposed before his chest, holding the crook and the flail, worn off, wearing the ceremonial 'false' beard and the Atef crown of Upper Egypt, the original uraeus missing, cheek-bands had inlay, the eyes inlaid with original shell.

Ex priv. coll. J.J.M., Netherlands 1950-1992, inherited H.W.S., Neth.

H. 25,4 cm. Brown and green patina. Mounted on wooden stand.

Late Period, 6th-4th cent. BC

€ 15.000

G. Steindorff, Catalogue of the Egyptian Sculpture in the Walters Art Gallery, Baltimore 1946, pls. LXVI-LXVII, ns. 376-7 var.



12. BRONZE FIGURE OF OSIRIS ENTHRONED

Mummiform figure of the god of the Underworld seated on a throne, his arms crossed before his chest, in his right hand holding the crook and in his left the flail, hanging partly over his right arm; he is wearing the Atef crown of Upper Egypt decorated with uraeus and striated side feathers, a ceremonial 'false' beard beneath his chin; small tang.

Ex priv. coll. J.J.M., Netherlands 1950-1992, inherited H.W.S., Neth.

H. 22,5 cm. Surface worn, tip of left feather missing. Dark patina

Late Period, 6th-4th cent. BC

€ 10.000

With original ticket of Sotheby's London, 10 July 1992 lot 579

Cf. G. Steindorff, Egyptian Sculpture, Baltimore 1946, no.381, pl. LXVIII



13. MINI BRONZE PENDANT OF FIVEFOLD OSIRIS

Fivefold mummiform figures of the god of the Underworld standing next to each other, sun disc on their head.

Ex priv. coll. D.W., 1990s, Netherlands

Dim. 4 x 4 cm. Dark patina. Extremely rare for five Ptolemaic Period, 3rd- 1st cent. BC

€ 1.875

Cf. C. Andrews, *Amulets of Ancient Egypt*, London 1994, fig.26 var.



14. BRONZE FIGURE OF KHONSU

Enthroned god of Karnak, son of Amun and Mut, clad in plaited skirt, wearing striated wig with frontal uraeus and lunar disc (missing) within crescent moon; arms bent, both hands clenched and pierced for holding a sceptre, rectangular base, tang underneath. Ex priv. coll. L.J., Netherlands 2015; before priv. coll. A.L., Germany 1960 - 1972

H. 8,2 cm. Brown patina, small restoration at lunula.

Late Period - Ptolemaic Period, 4th - 2nd cent. BC

€ 3.975

Cf. G. Roeder, *Aegyptische Bronzefiguren*, Berlin 1956, §215b, T78e



15. BRONZE SITULA

Body of vessel cast in shallow raised in two horizontal registers with decoration in lower part of a figure offering on an altar to the ithyphallic god Amon Re, three goddesses behind; in upper register two funerary boats, two pillars inbetween; two ringhandles on top.

Ex priv. coll. J.J.M., Netherlands 1950-1992, H.W.S. Netherlands 2000

H. 11 cm. Intact. Brown patina, mounted.

Late Period, 26th - 30th Dyn., c. 664 - 343 BC.

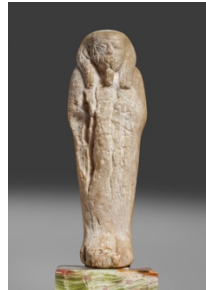
€ 4.250

With original ticket Christie's London, 27 April 1994, lot 141

Situlas are ceremonial vessels usually with water, used in religious rituals and funerary rites

Cf. G.D. Scott, *Temple Tomb and Dwelling, The Harer Collection III*, California State University, San Bernardino 1992, no. 29

EGYPT - USHABTIS



16. LARGE ALABASTER USHABTI

Mummiform, wearing striated tripartite wig and pharaonic 'false' beard, front of figure damaged, deliberately in ancient times?

Ex priv. coll. J.J.M., Netherlands 1950-1992, H.W.S. Netherlands inherited in 2000.

H. 23,2 cm. Apart from damage, otherwise intact. Mounted. Middle Kingdom, 12th dyn., 1981-1786 BC

€ 7.500

Publ. Sotheby's London, 10th July 1992, lot 572



17. ALABASTER USHABTI

Mummiform, wearing the layered 'duplex or daily life' tripartite wig, carrying agricultural tools in his crossed hands, carved in relief, a hoe in his right hand over his left hand holding a flail, also his facial details carved in relief, no beard. Possible painted inscription worn off his body

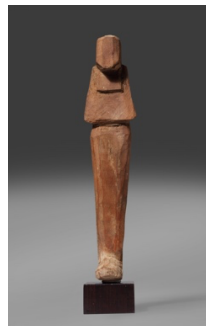
Ex priv. coll. J.J.M., Netherlands 1950-1992, H.W.S. Netherlands inherited in 2000.

H. 16,2 cm. Intact. Traces of black paint in his eyes.

New Kingdom, 20th dyn., c. 1237 - 1070 BC

€ 10.000

Cf. *Catalogue Cybele Paris 2022*, p. 32 var.



18. EARLY WOOD USHABTI

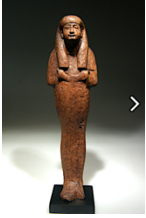
Mummiform, crudely carved and squared in cross-section, head cut rectangular, wig carved at the back, upper body tapering to a sloping bottom with protruding feet; flat reverse. Ex priv. coll. B.v.d.V., Netherlands 2020, acq. from AAG Auctions, Amsterdam, Netherlands

H. 20,5 cm. Intact. Mounted

Second Intermediate Period-New Kingdom, late 17th-early 18th Dyn., c. 1600-1560 BC. Rare

€ 1.975

Cf. G. D. Scott, *Temple Tomb and Dwelling, The Harer Family Trust Collection III*, San Bernardino 1992 no. 54; W.M. Flinders Petrie, *Shabtis*, repr. 1974, pls. XXIV-XXVI; *Chaouabtis*, Louvre 2003, p. 46



19. LARGE WOOD SHABTI

Shown mummiform, crossed hands in relief, each one holding a painted hoe, wearing tripartite wig, originally painted details worn off. Priv. coll. UK, acq. prior to 1970; hence priv. coll. T.W, Germany, thereafter coll. A.B., Netherlands, acq. June 2011 from above.
H. 21 cm. Small part of feet missing, worn in places, no repair
New Kingdom, late 18th Dyn., c. 1300 BC
€ 12.500



20. LARGE POLCHROME WOOD USHABTI OF ASET

Shown mummiform, crossed hands protruding from wrappings, wearing black tripartite wig, six horizontal lines of incised hieroglyphic text with the name of the owner Aset and part of the spell of the Book of the Dead, spell 6, calling the ushabti to answer when needed to do the work in the hereafter. Ex priv. coll. Vérité, Paris, acq. 1930-1960, hence coll. A.B., Netherlands, acq. from Christie's London 2011
H. 18,8 cm. Some traces of red paint, wear and tear, otherwise intact
New Kingdom, late 18th - 19th Dyn., c. 1375 - 1100 BC
€ 16.500



21. WHITE FAIENCE USHABTI FOR THE KING'S SON RAMSESSES

Mummiform, both hands holding a hoe in relief, and his head in brown faience, his short wig with sidelock, collar of strings and beads, and a vertical column with hieroglyphs in black faience: '... fan-bearer at the right hand side of the king, chief bowman, king's scribe, overseer of the army and fleet (or 'of foreign lands')...'. Could have been the second son of Ramse II, or himself when he was prince under his father Seti I.
Ex priv. coll. L. Benguerel y Godó, Spain; acq. London 1960s; thereafter German coll.H.P.; since 2014, Alexander Ancient Art, Netherlands.
H. 14,5 cm. Intact. Excellent condition.
New Kingdom, 19th Dyn., c. 1304 - 1237 BC
€ 24.500

*Note: the wig with sidelock identifies him as a sem priest, a title usually worn by the high priest of Ptah
Ramses II had more than 100 children from multiple wives*



22. BLUE GREEN FAIENCE USHABTI OF (DI-)PAY

Mummiform, black tripartite wig, holding hoe in each of his crossed hands, frontal column of hieroglyphs in black reading: '...The Osiris, the sehedj Dipay, justified...'
Ex coll. M.H., acq. from Alexander Ancient Art, Netherlands 2010; before, coll. M. Betz, USA (2006)
H. 12,9 cm. Intact
New Kingdom, 19th - 20th Dyn., c. 1293-1085 BC
€ 5.250



23. BRILLIANT BLUE FAIENCE USHABTI OF NESY-PER-NUB

Scribe of god's father Mut, holding hoe in his crossed hands, black details of striated tripartite wig, heart amulet and two vertical columns of hieroglyphs reading: '...I will irrigate (the riparian lands) for the Osiris, the Scribe and God's Father of Mut, Nesiy-per-nub, justified...'
Ex priv. coll. Dr. J.W. Leyds, acq. 1926-7, hence by inheritance priv. coll. T.v.A., Netherlands
H. 14,5 cm. Intact. Mounted
Third Intermediate Period, 21st Dyn., 1069 - 945 BC, Deir-el-Bahri, II Cachette, Thebes
€ 14.500
Cf. G. Janes, Shabtis, Paris 2002, p. 101; L. Aubert, Les Statuettes de la deuxième Cachette de Deir-el-Bahri, p. 76



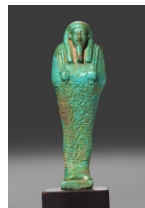
24. BRIGHT BLUE FAIENCE USHABTI OF TASHED

Mummiform, wearing striped wig, pick and hoe in crossed hands, hieroglyphic text '...The Lady of the House, Chantress of Amun, Tashed...'; striped seed bag at the back. Ex Bonhams London, 2013.
H. 11 cm. Mounted on perspex stand
TIP, 21st dyn. C. 1069-945 BC
€ 2.475



25. LARGE BLUISH GREEN USHABTI OF SHAKSHA

Mummiform, holding a hoe in his crossed hands, wearing tripartite wig with fillet, knotted at the back, frontal column with hieroglyphs stating his name; all details in black faience. Ex priv. coll. J.J.M., Netherlands 1950-1992, H.W.S. Netherlands inherited in 2000.
H. 19 cm. Repaired. Mounted
Third Intermediate Period (TIP) 22nd-23rd Dyn., c. 800 BC
€ 8.500
Publ. Sotheby's London, 10th July 1992. Lot 556; Christie's London, 6th July 1994, lot 91



26. GREEN FAIENCE USHABTI OF PT-ABU-MEH

Treasurer of the king of Lower Egypt, royal acquaintance, nicknamed Psamtek-Semb, son of AA-KHA and Tawepet-Nephret; mummiform, wearing tripartite wig and pharaonic 'false' beard, holding pick and hoe in opposite hands, hieroglyphic text in eleven horizontal lines, back pillar, seed bag over his left shoulder. Ex priv. coll. J.J.M., Netherlands 1950-1992, H.W.S. Netherlands inherited 2000.
H. 16,2 cm. Intact, small chip from base. Mounted
Late Period, 26th Dyn., c 664-525 BC
€ 8.750
Publ. Sotheby's London, 10th July 1992. Lot 567; Christie's London, 6th July 1994, lot 83



27. LIGHT GREEN FAIENCE USHABTI HORUDJA

For the priest of goddess Neith, born to Shedet. Mummiform, wearing striated tripartite wig and pharaonic beard, holding pick and hoe in his opposite hands, backpack and seed bag; nine horizontal lines of hieroglyphic text. Ex priv. coll. J.J.M., Netherlands 1950-1992, H.W.S. Netherlands inherited in 2000.

H. 24,1 cm. From Hawara. Repaired and mounted
Late Period, 30th dyn., c. 380 - 343 BC

€ 7.500

Publ. Sotheby's London, 10th July 1992. Lot 558; Christie's London, 6th July 1994, lot 84. Cf. H.D. Schneider, *Shabtis, Rijksmuseum van Oudheden, Leiden 1977*, p. 178, no. 5.3.1.134; J.F. Aubert, *Statuettes Egyptiennes, Paris 1974*, pp.261 ff, pl 65 no. 154

EGYPT - AMULETS



28. RED JASPER TIT AMULET

Girdle of Isis in red jasper, colour of the blood of Isis, giving protection, loop-shaped with long sash, flanked by two folded loops with incised details, back flat. Ex Christies London, December 1996

H. 4,8 cm. To be placed on the neck of the deceased.

New Kingdom, 18th - 19th dyn., 1650 - 1085 BC

€ 2.500

Cf. C. Andrews, *Amulets of Ancient Egypt, London 1994*, pp.44-45, fig. 49; Petrie, *Amulets 88*



29. LARGE BLUE FAIENCE BES AMULET

Dwarf-like god of children and music, standing frontal on his bandy legs, his hands holding a rounded object (tambourine?), wearing a large feather crown on his head. Ex priv. coll. J. Eisenberg, New York, acq. 1984, thence Sands of Time Ancient Art, Washington DC, USA.

H. 7,5 cm Intact

Third Intermediate Period, 21st Dyn., c. 1070 - 945 BC

€ 7.775



30. BLUE GREEN FAIENCE AMULET OF ISIS SUCKLING HORUS

Isis with hieroglyph for her name on her head, suckling infant Horus, propped up by her left hand, seated on throne decorated with cross-hatching in relief. Ex priv. coll. H. Z., Netherlands, acq. PAN fair 1999.

H. 3,9 cm. Intact, pierced for wearing.

Late Period - Ptolemaic Period, 6th - 3rd cent. BC

€ 2.500

Cf. C. Andrews, *Amulets of Ancient Egypt, London 1994*, p. 22 no. 18b



31. BLUISH FAIENCE AMULET OF TAUERT

Goddess of pregnancy, in shape of pregnant hippopotamus holding her hands on her belly as to protect it, wearing striped wig, and leaning on her large hatched tail at the back; small ring at neck for wearing.

Ex priv. coll. H. Z., Netherlands, acq. from Archea 2001.

H. 3,9 cm. Intact.

Saite Period, 26th Dyn., 664 - 525 BC.

€ 1.975

Cf. C. Andrews, *Amulets of Ancient Egypt, London 1994*, p. 22 no. 39b
Sir. W.M. Flinders Petrie, *Amulets, London 1975*, no. 236



32. PAIR OF MINI BLUE FAIENCE PAINT POTS

Completely 'painted' in greenish blue faience, small flattend lip, body tapering to flat bottom. Ex priv. coll. H.Z., Netherlands, acq. PAN fair 1995 from priv. coll. J. Beekmans, Netherlands 1995.

H. 1,8-2,1 cm; diam. 3,8-4,1 cm. Intact

Late Period, 6th - 4th cent. BC

€ 2.500



33. BLUISH FAIENCE AMULET OF PATAKE

God of Memphis, and worshipped as god of the creation, said to have shaped the kosmos, patron of craftsmen and sculptors, standing naked on his bandy legs, tight skull cap on his head, holding his arms to his hips, holding fully shaped buttocks; on trapezoidal shaped base.

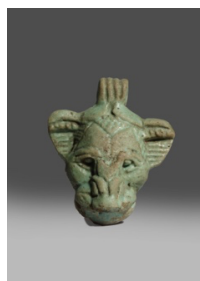
Ex priv. coll. B.v.d. V., Netherlands, acq. from AAG Auctionhouse, Amsterdam 2020, ex coll. S.J., Lelystad, Netherlands before 2000.

H. 8 cm. Intact

Late Period, 4th - 3rd cent. BC

€ 1.500

Cf. C. Andrews, *Amulets of Ancient Egypt, London 1994*, p. 39, fig. 36



34. BLUE GREEN FAIENCE PENDANT

Amuletic pendant of a lion's face moulded in prominent relief of facial features of deep-set eyes, broad nose and large striated ears; ridged loop on top, reverse flat. Ex priv. coll. R. Korbee, Netherlands 2003.

H. 5,4 cm. Intact, small side chip repair.

before 600 BC

€ 3.500

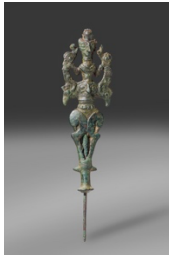
Cf. C. Andrews, *Amulets of Ancient Egypt, London 1994*

NEAR EAST



35. ANATOLIA. LIMESTONE COSMETIC CONTAINER

Small cosmetic container in the shape of a calf's head with carved details; small circular container carved out its back of the neck.
Ex priv. coll. London, acq. from Mayfair Gallery, early 1990s, coll. nr. 88.382; thence priv. coll. H.v.H, Netherlands, after 2000.
Dim. 3,8 x 5,7 cm. Mounted.
1st mill. BC
€ 5.500



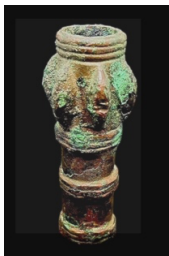
36. LURISTAN, LARGE CAST BRONZE FINIAL

'Potnia Theron' or 'Master of Animals' type, anthropomorphic tube flanked by rampant animals; two human faces on the tube, beaked bird heads, original pin inside. Ex priv. coll. D. W., Netherlands 1990s
H. 26 cm. Dark green patina. Mounted.
8th - 7th cent. BC
€ 1.500
Cf. P.R.D.S. Moorey, *Catalogue of the Ancient Persian Bronzes in the Ashmolean Museum, Oxford 1971, p.157, nos. 178-179*



37. LURISTAN CAST BRONZE FINIAL

'Master of Animals' type, anthropomorphic tube flanked by rampant animals. Ex priv. coll. D. W., Netherlands 1990s
H. 14 cm. Dark green patina.
8th - 7th cent. BC
€ 750
Cf. W. Hornbostel e.a. *Kunst der antike, Hamburg 1079, no. 38*;
P.R.D.S. Moorey, *Catalogue of the Ancient Persian Bronzes in the Ashmolean Museum, Oxford 1971, no. 175*



38. LURISTAN MINI BRONZE MACE HEAD

Small hollow mace head with knobs and four ringbands.
Ex priv. R.v.D., Netherlands, before 1990
H. 7,2 cm.
3rd mill. BC. Brown and green patina
€ 495



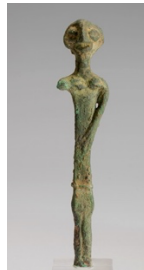
39. ANATOLIAN/LURISTAN/CANAANITE BRONZE AXE HEAD

Fenestrated axe-head with crescentic semi-circular blade. Green patina.
Dim. 9,5 x 8,2 cm. Ex Sotheby's New York 2002
Early 2nd mill. BC, 18th-17th cent. BC
€ 1.875
Cf. O. Negbi, *Canaanite Gods in Metal, Tel Aviv 1976, p. 123, fig. 138*



40. SUMERIAN BRONZE OFFER BEARER

Naked male figure with long striated hair and a beard, standing with his slightly wide apart, his arms cut off.
Ex priv. coll. F. O., Netherlands, acq. PAN Amsterdam 1997; before, M.A. Bax, ex priv. coll. H. Smeets, Netherlands.
H. 11,5 cm. Heavy red and brown patina. Mounted. Very rare
3rd mill. BC, c. 2700 BC
€ 17.500
Publ. H. Smeets Collection, Weert 1975, p. 30, no. 34.



41. CANAANITE BRONZE FLAT FEMALE IDOL

Flat cast female idol figure with small breasts, rounded head with large applied eyes, nose and mouth, holding one arm across her elongated body to her abdomen, one arm missing, standing on shortened legs.
Ex priv. coll. G.C. O., Netherlands, acq. Tefaf 2003; before, Jacques Schulman BV, Amsterdam 1979.
H. 10,3 cm. Mounted on Perspex. Green patina.
Early 2nd mill. BC., The 'Syrian' Group, so-called war gods figures
€ 4.250
Cf. O. Negbi, *Canaanite Gods in Metal, Tel Aviv University 1976, no.24*



42. LURISTAN BRONZE SPOUTED VESSEL

Slightly curved carinated body with incised decoration of lying goat between two lions, manes hatched; flaring upperpart with large narrowing beak.
Ex priv. coll. H.v.H., Netherlands, ex G.G., London 1980s.
H. 17,5 cm. Intact, green and red patina. Small chip from rim.
1st mill. BC, 8th - 7th cent. BC. Rare
€ 7.000
Cf. P.R.S. Moorey, *Catalogue of the Ancient Persian Bronzes in the Ashmolean Museum, Oxford 1971, pp. 276-280*

GREECE

**43. CORINTHIAN RING ARYBALLOS**

Terracotta aryballos in shape of a ring with short neck with chequer board pattern, two handles from rim to shoulder, body decorated on both sides with running dog above and waterbird below, small central chequer pattern, on low stemmed ring foot with bands; one side turned red in firing. Ex priv. coll. P.v.R., 1992-2008, thence by inheritance coll. P.G., Netherlands.

H. 13,5 cm, diam. 10,3 cm. Unusual shape.

6th cent. BC

€ 2.500

**44. CORINTHIAN POTTERY 'FOOTBALL' ARYBALLOS**

Spherical body, neck and mouth completely varnished with brown slip, body and upperpart of disc-shaped mouth decorated with vertical incised 'melon' segments, of which five body segments with added white. Ex priv. coll. C. Stibbe, Netherlands; hence coll. L. v. Roozendaal, Netherlands, acq. 1987 from former owner; thence by descent.

H. 6,5 cm. Small chip from body and mouth, lead seal attached

Middle Corinthian, c. 600-575 BC

€ 2.250

Cf. I. Jucker, Aus der Antikensammlung des Bernischen Historischen Museums, bern 1970, nr. 23, fig. Pl. 9

**45. CORINTHIAN WARRIOR ARYBALLOS**

Spherical body decorated with five helmeted and bearded warriors carrying large red shield and spear. Ex priv. coll. M.B., Netherlands 2006, from Gallery M.Z. 2002, acq. from Bonhams London 2002

H. 6,5 cm. Intact

Late Corinthian, 575-550 BC

€ 3.500

Cf. W Hornbostel, Kunst der Antike, Mainz 1977, no. 215

**46. CORINTHIAN ARYBALLOS**

Spherical body decorated with youth on horseback galloping to the right, filling ornaments of rosettes in field, petals on top of disk-shaped mouth, around shoulder and base, dotted rim; short cylindrical neck, small band handle. Ex priv. coll. G.O., Netherlands, acq. from Gallery M.Z.; before, HAC, Basel 1997

H. 6,6 cm. Intact

Middle Corinthian, Royal Library Painter, c. 600 BC

€ 5.250

Note: attribution Dr. C.W. Neeft, Amsterdam 1997

**47. CORINTHIAN ARYBALLOS**

Globular body decorated with two rows of incised scale pattern with central red dot, lower part of body with red tongues, discus-shaped mouth with incised z-pattern, alternating red and black tongues on top; broad angular handle from mouth to shoulder with large red cross.

Ex priv. coll. J.A.Z., Netherlands 1990s, coll. R.Z. by inheritance 2020.

H. 10,5 cm. Intact, some weathering

6th - 5th cent. BC

€ 2.000

**48. SMALL GREEK ALABASTER ALABASTRON**

Slender, somewhat elongated body with broad disc rim and pronounced ridge encircling upper part of body, tapering to a rounded base. Ex coll. George R. Francoeur, Bloomfield Hills, MI., USA, acq. from Charles Ede Ltd., London, catalogue 162, May 1996, no. 46

H. 10,5 cm. Chip at lip restored, otherwise intact.

6th cent. BC

€ 2.500

**49. ATTIC BLACK FIGURE SIANA CUP**

Large kylix on low stemmed foot with symposium scene on side A showing four couches, each with a symposiast conversing with each other, white dotted wreaths hanging above, small table with food in front; side B horsemen scene showing four naked horseriders galloping to the left, third horse in added white paint, rosette and bird in field. Inside tondo decorated with heraldic sphinx within tongue pattern bordered by four concentric circles; terracotta pin at underside foot.

Added red and white paint for details. Ex priv. coll. L.v.R., Netherlands, acq. from Sotheby's London, July 1985 no. 207

H. 12,8 cm; diam. cup 26 cm. Intact. Some paint flaked off

Greece, 565 - 560 BC by the Taras Painter

€ 9.000

Cf. H.A.G. Brijder, Siana Cups II, Amsterdam 1991, p. 480, pls 161a-b, 162d.

**50. ATTIC RED FIGURE KYLIX**

Shallow cup kylix on high stem decorated at the outside with a scene on either side of two couples of youths courting boys, the elder leaning on a stick; inbetween the couples a writing diptych with stylos and a purse, a bag for knucklebones hanging above at the right. Inside, a draped bearded man standing to the left before an altar, holding a staff, a pair of sandals hanging behind; inside and outside a Greek inscription of 'ho pais kalos' (the boy is beautiful)

Ex Münzen und Medaillen, Basle 1984; Jürgen Haering, Galerie am Museum, Freiburg 1984-5; dr. L. v. R., Netherlands, 1985-2018

Dim. 38,5 x 13,5 cm, with handles included. Repaired.

Tarquinius Painter, c. 470 BC

€ 32.500

Published: Galerie Nefer, catalogue 2, Zürich 1984, no. 81; Beazley Archive Pottery Database, no. 15223; cf. J. Boardman, Athenian Red Figure Vases, The Classical Period, London 1989, p. 38

The Tarquinia Painter was a pupil of the Antiphon painter, a companion of the Pistoxenos Painter, and thus a later member of the workshop run by the famous cup-potter Euphronios.



51. ATTIC BLACK FIGURE AMPHORA

Side A: scene of a man, dressed in chiton with mantle, leaning on a stick, his right arm stretched out in a greeting gesture to a woman, seated on a folding stool, holding a flower to her face.

Side B: both figures seated in a more intimate setting, while he is touching her shoulder and arm, she is putting her left arm on his thigh, still holding the lotus flower in her right hand. Palmette in lower field at either side, design of linked palmettes with central lotus bordering the scenes; alternating linked palmettes on neck, row of tongues on shoulder; dotted border below scenes, rays above base.

Ex priv. coll. G.S., Netherlands, acq. from Sotheby's London 1978

H. 23 cm. Repaired and restored in places.

Greece, c. 510 - 500 BC

€ 8.250



52. ATTIC BLACK FIGURE LEKYTHOS

Elegant lekythos, body on disc foot, painted black with nice full gloss, reserved parts at underside foot and shoulder, inside handle, neck and concentric band on top of mouth; shoulder decorated with tiny palmettes, ring of stripes at base of neck. Ex coll. G.B., Netherlands, acq. from J. Haering, Freiburg 2009; before, priv. coll. Biel Switzerland.

H. 13.4 cm. Intact.

Greek, c. 480 - 450 BC

€ 3.950



53. BOEOTIAN TERRACOTTA 'PAPPADES' FIGURE

Solid, hand-made flat body of a female figure with short arms stretched out, long neck and bird-like beaked face, wearing small flaring polos with large voluted curl on her head; dotted, striped and wavy decoration in black all over his figure. Light orange brown clay.

Ex priv. coll. H.M., Canada, acq. 2007 (with statement).

H. 17,4 cm. Chip from the back, otherwise intact.

6th cent. BC, c. 580 - 550 BC

€ 2.250

Cf. R.A. Higgins, *Catalogue of the Terracottas in the British Museum*, London repr.1970, Vol. I, no. 775, pl. 104; Robert A. Lunsingh Scheurleer, *Grieken in het Klein*, Allard Pierson Museum 1986, no.13



54. BOEOTIAN TERRACOTTA SEATED 'GODDESS'

A large statuette of seated female figure with flat, thin body, stylised arms shaped as small stumps, long neck with three long thick strands of hair falling onto her shoulders, onto nape of her neck and onto the backrest of her chair; head consisting of a large nose, eyes indicated in black, mouth and chin absent, polos with voluted curl on top; decoration of hair and dress in black paint. Ex priv. coll. O. M. Pessac, France, acq. from Rossini Paris 2016; thence Galerie Tarantino, Paris, with restoration report of Atelier Bresson. Traces of old labels.

H. 18,5 cm. Some repair at rear leg of chair

Boeotia, first half 6th century BC

€ 7.500

Cf. R.A. Higgins, *Catalogue of the Terracottas in the British Museum*, London repr.1970, Vol. I, no. 767, pl. 101;



55. EAST GREEK TERRACOTTA MODEL OF ANTEFIX

Fragment of a model of a temple front with plain roof; front with relief decoration of large palmette with volute lotus flowers and a band of meanders below; part of roof broken off.

Ex Frank Sternberg, Zürich, Switzerland 1970s; Musée d'Art Classique de Mougins, France, acq. from Christie's NY 2007.

Dim. 17,5 x 26 cm.

6th cent. BC

€ 4.500

Publ. M. Merrony (ed.), *Mougins Museum of Classical Art*, Mougins, 2011, p. 64, fig. 22



56. BOEOTIAN POLYCHROME TERRACOTTA LADY

Standing and wearing large veiled polos over her extensive curly hair dressed up in four layers, with wreath on top; clad in girdled peplos, holding a casket with open lid in her left hand, from which emerges a fillet, holding the other end of the fillet in her right arm by her side.

Ex priv. coll. Wagelaar, Bergen, Netherlands, 1990s - 2000s

H. 36,5cm. Intact. Mounted. Traces of red paint in her curls.

5th cent. BC

€ 5.500

Cf. R.A. Higgins, *Terracottas of the British Museum*, 1969, no. 851, pl. 119

SOUTH ITALY

**57. APULIAN RED FIGURE HYDRIA, VARRESE PAINTER**

Side A shows a scene of a woman dressed in a chiton, holding palmbranch in her right hand, a cista and mantle in her left, walking to the right towards a naked young man looking back while holding a wreath with fillet and mantle; dotted fillet inbetween. Large palmette beneath vertical handle, wave pattern below, half volute at either side. Ex priv. coll. A. de M., Brussel before 1970, hence Polak Works of Arts, Amsterdam 2013.

H. 35,5 cm. Intact. Details in added white paint.

4th cent., 360-340 BC

€ 7.500

Cf. A.D. Trendall/A. Cambitoglou, *The Red-figure Vases of Apulia*, vol. I, Oxford 1978 pp. 335-356, pls. 108-114

**58. PAESTAN RED FIGURE OINOCHOE, NAPLES 1778**

Red figure 'Dionysiac' scene of naked young man with thyrsus staff and wreath leaning on a shield towards woman seated on a rock, who looks back at him and dressed in long dotted chiton with panther skin, holding thyrsus staff. Large palmette between half volutes beneath vertical band handle, trefoil mouth; details in added white, yellow and red. Ex priv. coll. A. de M., Brussels before 1970, hence Polak Works of Arts, Amsterdam 2013.

H. 27,7 cm. Intact, some paint flaked off at rim of mouth.

4th cent. BC, 330 - 320 BC. Painter of Naples 1778

€ 7.000

Cf. A.D. Trendall/A. Cambitoglou, *The Red-figure Vases of Paestum*, vol. II, Oxford 1982

**59. APULIA, SMALL RED FIGURE BELL KRATER**

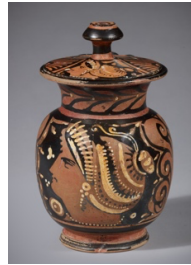
Red figure decoration on side A of a leopard standing in attentive posture to the left, body dotted, ears straight up, tail raised, half volutes at either side, large white bordered red roundel before him, ivy leave between three berries in added white in upper left and right of scene, window(?) above; side B with lady seated on rock to the left, holding a wreath in her right and an alabastron in her left hand, white bordered red roundels and white ivy leave with berries at either side above and before her; palmette beneath the horizontal handles.

Ex priv. coll. Groeneveld, Amsterdam, collected late 19th cent., inherited by descent, Netherlands, 1990 - 2008

H. 17,5 cm. Intact

4th cent. BC

€ 3.500

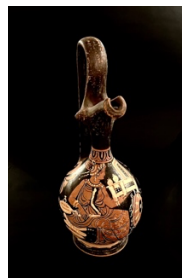
**60. APULIAN RED FIGURE LIDDED OINOCHOE**

Body decorated with female head 'en profile', wearing a radiated wreath and her hair in a ornate saccos in added white and yellow colors; large palmette under the handle, which formed into a 'Herakles knot', laurelband around neck; lid with two female heads 'en profile' alternating with a palmette. Ex German priv. coll. 1960s - 1990s, hence Bonhams London 2013 and acq. from Bonhams London 2022.

H. 18,5 cm; ink number '129' on the underside of base and of lid.

4th cent. BC, 340 - 330 BC

€ 4.500

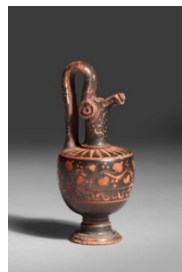
**61. APULIAN RED FIGURE EPICHRYSIS**

Rounded body with high handle curving above to beaked mouth, small lion head applique at either side; decoration of woman seated on a rock holding a large casket, tympanon and palm branch before; scene set between two half volutes, palmette beneath handle, band of ovolo's at base of neck. Ex priv. P.v.R., Netherlands 1992-2012, inherited by P.G., Netherlands.

H. 20,8 cm. Intact.

4th cent. BC

€ 2.250

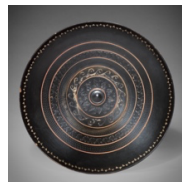
**62. XENON MINI OINOCHOE**

Added red figure decoration of ivy tendrils on body, rays on flattened shoulder, high handle, beaked mouth with discs.

Ex priv. coll. P. v. R., 1992-2012

H. 10 cm. Intact. Xenon Group, 4th cent. BC

€ 775

**63. TEANO WARE DISH**

Completely black glazed circular dish on short ring foot; inside decorated in added white paint of small band of ivy leaves and an inner band of wave pattern around band of stamped designs and an omphalos, three bands of stamped designs within red lines in field.

Ex priv. coll. Groeneveld, Amsterdam, collected late 19th cent., inherited by descent, Netherlands, 1990 - 2008

Diam. 20,5 cm. Intact

c. 300 BC

€ 1.100



64. DAUNIAN FUNNEL KRATER

Globular body and funnel-shaped mouth, two vertical handles and two plastic animal heads on shoulder, decorated in red and black with several horizontal bands, in handle zone on either side two panels with squares, divided by animal heads. Ex private coll. G.B., acq. from gallery Stormbroek, Netherlands 2003

H. 22.5 cm. Some wear.

South Daunian, Subgeometric IIA-B, 6th-5th cent. BC

€ 2.700

Cf. D. Yntema, *The Matt Painted Pottery of Southern Italy*, Thesis Vrije Universiteit, Amsterdam 1985, p. 367, fig. 249 var.



65. DAUNIAN TERACOTTA KYATHOS

Shallow bowl with broad and high arching and looped handle with applied disc 'eye' knobs imitating rivets and stylised 'animal head' with large pointed horns on top, decorated with geometric patterns in umber, black and red paint. Used as a ladle for dipping diluted wine from larger mixing bowl.

Ex priv. coll. P.v.R. 1992-2012, inherited P. G., Netherlands.

H. 15 cm; diam. rim 15, cm. Handle repaired

550 - 450 BC

€ 2.250

Note: Centre of production was Canusium/Canosa

Cf. *British Museum, Catalogue of Greek and Etruscan Vases I, 2, pl.27 H253-H254.*



66. LARGE DAUNIAN OINOCHOE

Rounded body with decoration with central broad band between red lines with frieze of four diagonally striped chequered patterns, broad bands above and below; high arching and looped handle with applied disc 'eye' knobs from rim of large mouth to halfway body. Ex priv. coll. P.v.R., 1992-2012, hence by descent coll. P. G., Netherlands.

H. 21 cm. Intact

6th-5th cent. BC

€ 2.000



67. DAUNIAN DOUBLE ASKOS

Double askos decorated with geometric patterns in red, brown and black of bands, lines, verticals and diamonds; horizontal handle between two trumpet-shaped mouths Ex priv. coll. P.v.R., Netherlands, 1992-2012, hence by descent coll. P. G., Netherlands.

H. 9 cm. w. 15,5 cm. Intact, tiny chip from both mouths

c. 500 BC

€ 1.875



68. GNATHIAN BLACK-GLAZED SKYPHOS

Decorated with galloping dark brown dotted white painted deer in between bushes, white dotted baseline, double dotted and verticals above as well as a band with red and yellow/white sections and a band of linked volutes; reverse with elaborate decorations of grapes and palmettes, at lower part an alabastron between birds.

Ex priv. coll. Prof. v.d. T., 1970s-1990s, sold at De Zwaan auctions 2024. H. 8,8 cm. Intact, very nice condition.

4th cent. BC

€ 1.975



69. GNATHIAN EPICHYSIS

Reel-shaped body with high handle curving above to beaked mouth, small head applique at either side; added decoration of vertical stripes in white at lower part of neck, shoulder decorated with two opposite rows of grapes and tendrils in white and yellow, divided by central line in red; row of white stripes below. Ex priv. coll. J.H.S, Amsterdam 1976 H. 17 cm; beak repaired, small chip from base, otherwise intact

Last quarter 4th cent. BC

€ 1.450

Cf. Hornbostel, *Kunst der Antike*, no 320; J.R. Green, *Gnathia Pottery*, Bonn 1976



70. GNATHIA ROUND-BODIED EPICHYSIS

High arching handle to beaked spout, flanked by small lion masks in relief; added polychrome decoration on body in rows of s-pattern, meanders, zigzags and a central row of horizontal laurels with frontal rosette in centre; all within row of egg-and-dart pattern. Small fire crack, otherwise intact. Ex priv. coll. P.J., Netherlands, formerly with Jacques Schulman BV., Amsterdam, 1978, List 213, nr. 18

H. 19,2 cm. Intact

Circle of the Rose Painter, c. 330 BC

€ 1.975

Cf. J.R. Green, *Gnathia Pottery*, Bonn 1976;

BICS Bulletin of the Institute of Classical Studies, University of London 1971, vol.18, p. 32

ETRURIA



71. VILLANOVA BUCCHEROID IMPASTO OINOCHOE

One-handled jug, shoulder decorated with incised pendant triangles, two parallel incised horizontal bands at base of flaring neck; vertical handle in form of stylized animal head with two pronounced horns, small ring foot, flat underside. Ex priv. coll. P.v.R., Netherlands, 1992-2012, hence by descent coll. P. G., Netherlands.

H. 13 cm; intact, two tiny chips from rim, smoothed surface
8th cent. BC.

€ 1.750

Cf. I. Jucker, Italy of the Etruscans, Israel Museum, Jerusalem 1991, nos. 175 for decoration, and 183 for handle



72. ITALO GEOMETRIC DISH

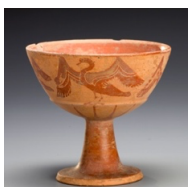
Circular shaped plate on small ring base, two holes in innerside rim for hanging, geometric decoration on inner side of broad bands, and group of circles; rim decorated with seventeen blocks of six vertical stripes, alternating.

Ex priv. coll. P.v.R., Netherlands, 1992-2012.

Diam. 19,6 cm. Intact

8th cent. BC

€ 950



73. ETRUSCAN BLACK FIGURE PONTIC CHALICE

Cup on stemmed flaring foot, underside reserved; body decorated with scene of swans fluttering to the left with widespread wings; offset base of cup decorated with band of rays. Black paint fired red all over, added red paint on wings fired grey; stem hollow, tapering to base of cup.

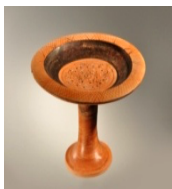
Acq. from Royal Athena Galleries, New York 2013.

H. 9,2 cm. Small chips of rim restored, burned to red, otherwise intact.

6th cent. BC

€ 4.500

Cf. L. Hannestad/A. Drukker, The Followers of the Paris Painter, Copenhagen 1976, p. 72, no. 111, pl. 45b



74. ETRUSCAN STEMMED DISH.

Tondo decorated with scroll and dot pattern in umber red and white slip, circumscribed by plain band with a cross-hatch decorated flattened rim, underside with rays emanating from the top of stemmed foot. Ex private coll., Munich, Germany, acquired before 1990

H. 14 cm. Diam. 23.3 cm. Repaired with minor restoration.

c. 6th cent. BC

€ 2500



75. ETRUSCAN RED FIGURE BEAKED OINOCHOE

Decorated with satyr and maenad scene, naked satyr with tail offers maenad a white beaded necklace between large florals; on cylindrical neck a woman dressed in peplos, an apple(?) in outstretched arm between half voluted palmettes; band handle with thumb rests.

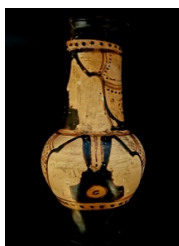
Ex priv. coll. J.H.S., Netherlands 1976 - 1980s

H. 27,5 cm. Intact.

4th cent. BC. Torcop Group

€ 4.750

Cf. J.D Beazley, Etruscan Vase Painting, New York 1976, p.169, pl.36 var



76. ETRUSCAN RED FIGURE BEAKED OINOCHOE

Body decorated with two facing female heads without facial details, their hair dressed up in a dotted sakkos with tip of hair sticking out, sash and phiale inbetween; same type of female head on neck, half palmette before; dotted band above and below scenes; band handle.

Ex priv. coll. Prof. Dr. A.B., Netherlands, 1990s-early 2000s.

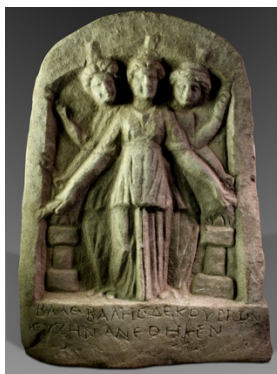
H 27,7 cm; Intact, small chip from mouth.

4th cent. BC. Torcop Group, Populonia Painter

€ 2.500

Cf. J.D Beazley, Etruscan Vase Painting, New York 1976, p.169, pl.38,4; M.A. del Chiaro, Studi Etruschi 28, 1960, pp.142ff

ROME



77. VOTIVE MARBLE STELE OF HEKATE TRIFORMIS

Relief of triple-bodied goddess Hekate, holding torches in her arms while offering sacrifices at an altar at either side of her; inscription below of Greek text: 'BALE BALHS DEKOVPION EYXHN ANETHKEN' 'Decurion Valerius Valens dedicated this in fulfilment of his vow'; rounded top, flat back.

Ex priv. coll. A.L.v.d.B., Netherlands; Gorny&Mosch, Munchen 216-06-004, no. 355, before, old German collection.

H. 41 cm. Intact

Eastern Mediterranean, c. 2nd - 3rd cent. AD

€ 14.000

Publ. Kernos 19 (2006), p. 363, no.61; parallel: British Museum London, inv. no. 1877, 0513.1

Note: Hekate was a chthonic goddess of the underworld and patroness of the intersection of three roads and of witchcraft



78. ROMAN BRONZE PRIAPUS FIGURE

Son of Zeus, god of virility and fertility, his tunica open at front showing his everlasting erection, cloth with fruits in his hands, supported by his penis. Ex priv. coll. L.J. Jansen, Netherlands, Gorny & Mosch, München 2007, hence priv. coll. H.v.H., Netherlands.

H. 9,5 cm. Green and red brown patina. Mounted
1st - 2nd cent. AD

€ 17.500

Cf. The larger statues of this type were used in Roman gardens as scarecrow, his usually enormous penis as a threat for thieves



79. ROMAN BRONZE MERCURIUS STATUETTE

God of trade and messenger of the gods, standing naked, his head with short curly hair turned slightly to the left, his mantle falling from his left shoulder over his left arm, his right arm alongside his body in which he held a now missing object, probably a purse or coin bag. His head is slightly turned to the side and his body having a slight curve, which is showing movement in the figure.

Ex priv. coll. L.J. Jansen, Netherlands, before 1995, Gorny & Mosch, München 2012, hence priv. coll. H.v.H., Netherlands

H. 11,7 cm. Nice red and green patina. Mounted
1st - 2nd cent. AD.

€ 25.000

Cf. Oriental Art auctions/art 600536

Mercury was the god of trade and industry, principal shrine in Rome at the Circus Maximus. Often modelled with a coin purse in his right hand, caduceus in his left hand, and a mantle is draped from his left shoulder.



80. ROMAN BRONZE SEATED DOG

Slender and graceful with short neck, rather large pointed head with big eyes, ears lay flat back, slender tail curls up to the dog's right, raising its left front leg as if begging for attention; set on rectangular base. Dark green patina, paw of frontleg lacking. Ex priv. coll. M.v.S., Netherlands, formerly Mariaud de Serres, Paris 1980s.

H. 5 cm. Mounted on yellow marble stand. ALR 2017
1st cent. AD

€ 9.750

Lit. A.P. Kozloff, Animals in Ancien Art, From the Mildenberg Collection, Cleveland 1981, p. 194-5, nr. 182 (standing); M. Comstock/C. Vermeule, Greek, Etruscan and Roman Bronzes, Boston 1971, nr. 217 var.



81. ROMAN BRONZE MIRROR CASE

Circular mirror box consisting of two large hinged discs with raised edges and outer surface decorated with one large and one small concentric circle in relief; both discs have a double omega-shaped handle at one side, hooked in a looped applique of a theatre mask, and a simple hinge at the other side; inner surface with polished silvering.

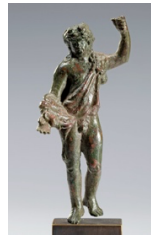
Ex priv. coll. Prof. Dr. A.B., Netherlands, bought at Tefaf 2007 from Kunsthandel Mieke Zilverberg, acq. from Christie's London 2006.

Diam. 12 cm without handles, 19 cm with handles

1st - 2nd cent. AD

€ 4.000

Cf. J.W. Hayes, Greek, Roman and Related Metalware in the Royal Ontario Museum, Toronto 1984, pp. 190-193, nos. 321-324 check



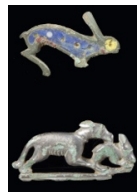
82. ROMAN BRONZE FIGURE OF HERCULES

Standing with his weight on his right leg, holding his left arm raised for holding a now missing spear, looking down at his right hand, his lions' skin hanging diagonally over his body from his left shoulder to lower part of his right arm. Ex priv. coll. M.v.S., Netherlands, acq. from AAG, Amsterdam 2018; former priv. coll. L.J., Netherlands, 2003 - 2017

H. 9,4 cm. Green and red patina. Mounted

1st cent. AD

€ SOLD



83. TWO ROMAN BRONZE FIBULAE

Bronze jumping hare with large upright ear, body decorated in blue with white dots, red lower part, and face in yellow enamel inlay; Silvered bronze dog chasing and catching a small rabbit. Acq. from 'De Zwaan', auctionhouse Amsterdam 2022, priv. coll. M.v.S., Netherlands. Both fibulae missing their pins; foreleg from hare broken off.

L. hare 3,5; l. dog 4 cm. Mounted

2nd - 3rd cent. AD

€ 1.250



84. ROMAN BRONZE BREAD STAMP

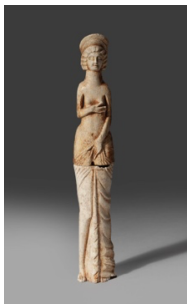
Rectangular shaped stamp with large carinated ring on top. Decorated with relief text of VIVAS IN DEO 'Live in God'.

Ex priv. coll. J. G., Netherlands, acq. from Gallery Stormbroek 2001

Dim. 5,2 x 2,7 x 2,4 cm. Dark patina.

3rd - 5th cent. AD

€ 2.500



85. ROMAN BONE STATUETTE OF 'VENUS PUDICA'

Carved in two separate parts, upperpart showing Venus half-naked with her right hand touching her left breast and pulling up her dress over her private parts with her left hand; wearing her hair in striated layers adorned with double diadem; lower part carved with her pleated dress, two small feet protruding; back flat.

Ex coll. Jacques Schulman, Amsterdam 1981, nr.48, fig. p.23

H. 23,5 cm. Intact

3rd cent. AD

Sold

Publ. Catalogue Jacques Schulman BV. Autumn 1981, nr. 48, fig. p.23



86. ROMAN BRONZE GILDED CROSSBOW FIBULA

Gilded, hollow, side bar with three nipples knobs, pin at underside.

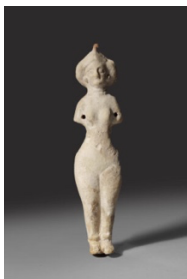
Ex priv. coll. J. G., Netherlands, acq. 1992-2021

L. 6, 3 cm; Nice green patina, pin partly broken off.

3rd - 5th cent. AD

€ 875

Cf. R. Hattat, Iron Age and Roman Brooches, Oxford 1985, nr.506, fig.57



87. TERRACOTTA FIGURE OF A DOLL

Children's toy in the shape of a naked female figure with hole for each loose arm, now missing. Ex priv. coll. J. G., Netherlands, acq. from Art Gallery Stormbroek 2007

H. 18,7 cm. Intact.

2nd - 3rd cent. AD

€ 1.250



88. TERRACOTTA SAINT MENAS FLASK

Two-handled pilgrim's flask, both sides with figure of Saint Menas standing 'en face' and preaching, holding camel in each hand, cross above. St. Menas was an Egyptian martyr, beheaded at Alexandria

Ex priv. coll. J. G., Netherlands, 1990-2020

H. 11,3 cm. 4th - 6th cent. AD

€ 1.975

Cf. C. Ziegler, Egyptian Antiquities, The Louvre, Paris 1997, p. 92 Centre for pilgrims was built in the desert in the 4th century AD



89. NORTH AFRICA TERRA CHIARA LAGYNOS

Red ware oinochoe, one-handed biconic body with relief decoration of wavy line and alternating vine leaves and bunch of grapes on shoulder, band of relief tongues on lower part; cylindrical neck with slightly everted mouth decorated with female head, fillet around her forehead with terminals in the shape of grapes on her long striated hair.

Ex coll. A.G. inherited, acq. from L. Vrancken, Eijsden Netherlands 2021

H. 17,5 cm.

4th cent. AD

€ 2.975

LAMPS



90. PHOENICIAN / CANAANITE TERRACOTTA LAMP

Shallow saucer lamp, earliest type; open, round bowl, beak-like wick-rest formed by pinching up the rim.

Ex priv. coll. prof. P.M.S. Jones, UK, before 2002.

L. 17,7; diam. 18,5 cm. Orange clay, fired black in places at underside.

Small chip from rim, otherwise intact.

2nd mill. BC, c. 1600 - 1400 BC

€ 975

Publ. Peter Jones, Collecting Ancient Lamps, Swansea 2002. Cf Y. Israeli/U. Avida, Oil-Lamps from Eretz Israel, Jerusalem 1988, pp. 9-10 cat. no.1; T. Szentleky, Ancient Lamps, Chicago 1969, p. 21 no. 1



91. GREEK TERRACOTTA STANDARD LAMP

Wheel made, round and flattened bowl with raised, conical tube in the centre; projecting shovel-shaped nozzle, black-glazed apart from side and underside; spiral grooves from wheel on base.

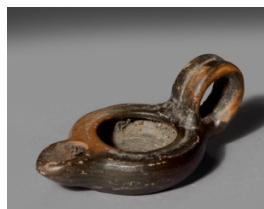
Ex coll. L.v.R., Netherlands, 1970s-90s

L. 10,8 cm, w. 8,6 cm; fire-crack and small chip rim.

5th cent. BC

€ 575

Cf T. Szentleky, Ancient Lamps, Chicago 1969, p. 31, no. 12



92. GREEK TERRACOTTA OILLAMP

Small terracotta black-glazed lamp with round bowl, shovel-shaped nozzle and broad double ring handle.

Ex priv. coll. J. G., Netherlands, 1992-2012.

L. 6,5 cm. Intact

5th cent. BC

€ 250



93. ROMAN DOUBLE-WICK TERRACOTTA LAMP

Circular body, discus decorated in relief with winged Amor running to the right, two voluted nozzles. Orange clay, handle missing.

Ex priv. coll. L.v.R., Netherlands, 1970-1990s.

Dim. 12 x 8,3 cm

1st cent. AD

€ 1.250



94. ROMAN TERRACOTTA OILLAMP

One-wick, round body, discus decorated with a relief scene of a bear attacking a bull, three relief circles around, voluted nozzle.

Ex priv. coll. J. G., Netherlands, 1990-2020.

L. 9,1 cm. Intact

1st cent. AD

€ 895

Cf. T. Szentleleky, *Ancient Lamps*, Chicago 1969, nos. 79-85



95. ROMAN TERRACOTTA OILLAMP

Round body, discus decorated in relief with erotic scene with symplegma, relief circles around, round heart-shaped nozzle.

Ex priv. coll. K.v.R., Netherlands 1990s

L. 9 cm. Intact

1st - 2nd cent. AD

€ 875



96. BYZANTINE BRONZE STANDARD OILLAMP WITH LID

Pear-shaped body with circular nozzle, handle with openwork scrolls and central volute palmette; dome-shaped lid decorated with incised grooves, double knob on top, small square hole in base to stick the lamp on a tripod stand. Ex priv. coll. K.V., Germany, acq. before 2000

Dim. 9,8 x 20,4 cm. Nice dark green patina

6th - 8th cent. AD

€ 5.500

Cf. H. Menzel, *Antike Lampen*, Mainz 1969, Nr. 689, var., Abb. 91,2



97. ROMAN GYPSUM XP LAMP MOULD

Mould for upperpart of a North African oillamp with a central relief of a XP monogram, a Christogram, as the symbol of Christ being the two first Greek letters of his name; around, a band of alternating appliques of concentric circles and palm leaves. L. 18,5 cm

Ex priv. coll. J. G., acq. from Gallery Stormbroek, Netherlands 2003

4th - 6th cent. AD

€ 2.250



98. NORTH AFRICAN TERRA CHIARA XP OILLAMP

Central relief of a XP monogram, a Christogram, as the symbol of Christ being the two first Greek letters of his name; around, a band of alternating appliques of roundels and triangles.

Ex priv. coll. J.G., Netherlands, acq. PAN 2004 from Kunsthandel

Zilverberg no. 150

L. 11,5 cm. Intact

4th - 5th cent. AD

€ 750

Cf. J.J. Hermann/A. vd Hoek, *Light from the Age of Augustine*, Harvard Divinity School 2002, no. 52



99. FRAGMENT OF GYPSUM XP LAMP MOULD

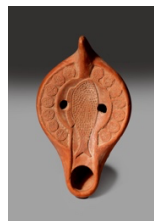
Male mould for upperpart of a North African oillamp with a central relief of a XP monogram, a Christogram, as the symbol of Christ being the two first Greek letters of his name; around, a band of alternating appliques of concentric circles and palm leaves. Ex coll. Rudolf Rack, Bad Neuheim 1950- 2010. Gorny & Mosch Auktion 296, München 2023, lot 102. Typus Hayes II.

L. 16,5 x 12 x 3,5 cm.

North Africa, 4th - 5th cent. AD

€ 1.875

Cf. for lamp H. Menzel, *Antike Lampen*, Mainz 1969, Nr. 606, Abb. 77,11



100. NORTH AFRICAN TERRA CHIARA FISH OILLAMP

Large fish decorated in dotted relief on discus, band of alternating XP (first Greek letters of Christ) roundels around.

Ex priv. coll. J.G., Neth., acq. from Antiken-Kabinet, Frankfurt 2004

L. 15 cm. Intact

4th - 5th cent. AD

€ 1.000

Note: the Fish (Greek 'Ichthus') was a secret symbol in the early period of Christianity due to the persecutions of the Romans

Cf. J.J. Hermann/A. vd Hoek, *Light from the Age of Augustine*, Harvard Divinity School 2002, no. 102

GLASS

**101. ROMAN BLUE MINI GLASS UNGUENTARIUM.**

Marbled blue and white glass piriform toilet bottle. Ex priv. coll. J.G. , Netherlands, acq.2007

H. 3,6 cm. Intact.

1st cent. AD

€ 650

Cf. Y. Israeli, Ancient Glass in the Israel Museum, The E. Dobkin Collection, Jerusalem 2003, no. 240

**102. ROMAN BROWN GLASS DATE FLASK**

Mould-blown brownish yellow glass date flask, short neck, cut-off type of rim. Ex priv. coll. J. G., Netherlands, acq. from Günter Puhze, Freiburg 2007

H. 8,3 cm. Intact.

1st-2nd cent. AD

€ 2.500

**103. ROMAN GREENISH BLUE SIDONIAN UNGUENTARIUM**

Mould-blown ovoid body with relief decoration of various vessels between columns, archers over bosses on shoulder, base with concentric circles; tubular neck with everted rim, folded inward.

Ex priv. coll. Klöti, Zürich, 19960-1982; priv. coll.J.O.R., Netherlands, acq from Cahn Int. AG 2019.

H 7,9 cm. Intact, blue silvery iridescence.

1st cent. AD

€ 4.750

Cf.E.M. Stern, Roman mold Glass, The Toledo Museum of Art, Rome 1995 113-127, cat. nos 15-33; Y. Israeli, Ancient Glass in the Israel Museum, The E. Dobkin Collection, Jerusalem 2003, nos.135-6

**104. ROMAN SMALL BLUE-GREEN PILGRIM FLASK**

Lentoid flattende body with cylindrical neck and rounded rim folded inward, small flattened base with pontil mark. Ex priv. coll. C. M., Netherlands 2001; hereafter J.O.R., Netherlands 2019

H. 10,1 cm. Intact

1st cent. AD

€ 3.250

Cf. Y. Israeli, Ancient Glass in the Israel Museum, The E. Dobkin Collection, Jerusalem 2003, no. 356; Glass with Divine Touch, Frides Laméris, Amsterdam 2017, no. DOS 22

**105. ROMAN COBALT BLUE POINTED UNGUENTARIUM**

Bag-shaped lower part of body terminating in pointed base, uneven upperpart, tall tapering neck with everted rounded rim, folded outward

Ex priv. coll. C.M., Netherlands 2003; hereafter coll. J.O.R., Netherlands Tefaf 2018.

H. 14 cm. Intact, mounted.

1st cent. AD

€ 4.750

Cf. Y. Israeli, Ancient Glass in the Israel Museum The E. Dobkin Collection, Jerusalem 2003, bos. 104, 107 var.; Oppenländer no. 638

**106. ROMAN BLUE UNGUENTARIUM**

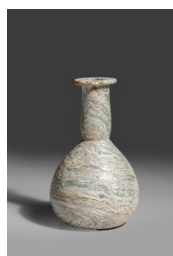
Globular body, tall flaring neck ending in everted rim; flattened and slightly indented base. Ex priv. coll. A. Niemeyer, Netherlands, priv. coll. C.M., Netherlands 1999

H. 11,4 cm. Intact

1st cent. AD

€ 4.750

Cf. Ancient Glass, Bomford Collection, Bristol 1976, no. 5

**107. BLUISH GREEN BANDED GLASS UNGUENTARIUM**

Piriform body, constricted at base of tubular neck, rim turned out, over, in and flattened; weathered, diagonally banded glass of body and neck.

Ex priv. coll. J. G., Netherlands 2006, acq. from D. Thirion, Brussels 2006

H. 12,5 cm. intact. Silvery iridescence

1st cent. AD

€ 2.450

Cf. Ancient Glass, Bomford Collection, Bristol 1976, nos. 100-101

**108. ROMAN MANGANESE SIDONIAN AMPHORISKOS**

Mould-blown, translucent amethyst ovoid ribbed body, short neck with everted rim, trailed-on twin handles from shoulder to one third of neck.

Ex priv. coll. C. M., Netherlands 2001

H. 8,5 cm. Intact. From Sidon

1st cent. AD

€ 5.000

Cf. A. Oliver jr., Ancient Glass, Carnegie Museum, Piitsburg, no.59

**109. ROMAN AMBER CUP OR ACETABULUM**

Hemispherical body on pad base, slightly flaring to rounded rim with pinched-out ridge or tubular flange below.

Ex priv. coll. F. of Surrey, UK 1960s; priv. coll. C.M., Netherlands, acq. 2010.

H. 4,7 cm. Tiny chip from base, otherwise intact.

1st cent. AD

€ 4.250

Cf. Oppenländer, RGM, Köln 1974-5, p. 108, no. 295; H.v. Rossum, Roman and Early Byzantine Glass, 2009, p. 20; Laméris, no. 63

**110. AMBER 'PILGRIM' FLASK**

Mould-blown body decorated with honeycomb pattern on both sides, small neck with wide funnel-shaped rim and applied white handles.

Ex coll. Donald Brown, Boston, USA, formed in 1960s; Bonhams 2014.

H. 12 cm. Intact. Some iridescence

2nd - 3rd cent. AD

€ 4.750

Cf. Glass with Divine Touch, The Dos and Bertie Winkel Collection, Amsterdam 2017, cat. nr. 70 p. 183

**111. ROMAN YELLOW GLASS AMPHORISKOS**

Yellow oval body with flattened base, cylindrical neck, everted ground rim, two vertical blue handles from shoulder to neck under mouth.

Ex priv. coll. C. M., Neth., acq. from Archea 2002.

H. 10 cm. Intact. Eastern Mediterranean, Judea or Palmyra

1st cent. AD

€ 5.250

Cf. Y. Israeli, Ancient Glass in the Israel Museum The E. Dobkin Collection, Jerusalem 2003, no. 337

**112. ROMAN SQUARE ONE-HANDLED GLASS BOTTLE**

Almost cuboic shaped with shoulder rounded at the edges, cylindrical neck tapering toward broad flattened mouth, ridged strap handle from shoulder to underside rim.

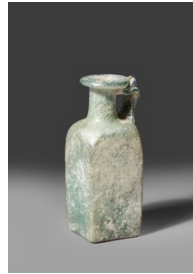
Ex coll. prof. v.d. Tweel, Netherlands 1970s

H. 13,5 cm. Intact. Calcareous iridescence.

1st cent. AD

€ 1.500

Cf. Y. Israeli, Ancient Glass in the Israel Museum, The E. Dobkin Collection, Jerusalem 2003, no. 325

**113. ROMAN ONE-HANDLED GLASS BOTTLE**

Rectangular shaped body, rounded shoulder at the edges, short cylindrical neck, flattened rounded mouth, handle from mouth to shoulder, curled at mouth.

Ex priv. coll. J.G., Netherlands 1992-2012

H. 14,3 cm. Intact

1st - 2nd cent AD

€ 1.500

Cf. Y. Israeli, Ancient Glass in the Israel Museum, The E. Dobkin Collection, Jerusalem 2003, no. 327

**114. SMALL ROMAN ONE-HANDLED FLASK**

Green glass, rectangular shaped body, rounded shoulder at the edges, short cylindrical neck, flattened rounded mouth, handle from mouth to shoulder; everted rim, folded inward.

Ex priv. coll. J.G., Neth. 1992

H. 9,5 cm. Intact, iridescence

1st cent. AD

€ 875

Cf. Y. Israeli, Ancient Glass in the Israel Museum, The E. Dobkin Collection, Jerusalem 2003, no. 327 var.

**115. ROMAN INDENTED GLASS BEAKER**

Free-blown transparent beaker on splayed foot with four large indents.

Ex priv. coll. J.G., acq. 2004 from Gallery W. Stormbroek, Netherlands

H. 11,5 cm. Intact

2nd cent. AD

€ 1.875

**116. ROMAN GREEN BEAKER**

Body tapering to three-quarter of total length, flaring to base, decorated with three wheel-cut bands, rim grounded, flat base, slightly indented.

From Cologne. Ex priv. coll. J.O.P., Neth., acq. from Drees Archeo, Brussels; before, L.D., Belgium, formerly priv. coll., Paris.

H. 10,5 cm. Intact. Cologne.

1st half of 2nd cent. AD

€ 5.000

Publ. Glass with Divine Touch, The Dos and Bertie Winkel Collection, Amsterdam 2017, cat. nr. 46, p. 127



117. ROMAN SEA-GREEN JANIFORM GLASS SPRINKLER

Body blown in bipartite mould in shape of two heads of a youth back-to-back, short neck constricted, broad slight collar mouth, pinched-out base. Ex Cahn, Basel; coll. P. Arts, Netherlands before 2000; thence priv. coll. C.M., Netherlands, acq. Bonhams, London 2001. H. 10,5. Intact
3rd cent. AD

€ 7.500

Pub. P.L.W. Arts, *Collection of Ancient Glass, 500 BC-500 AD, Lochem 2000, no. 61*



118. BROWNISH GLASS JANIFORM HEAD FLASK

Mold-blown double-headed glass, chubby face, back-to-back, knobby hair. Ex priv. coll. J.G., Netherlands, acq. from Frides Laméris, Amsterdam 2005. H. 9 cm. Intact.
3rd-4th cent. AD

€ 4.500

Cf. Y. Israeli, *Ancient Glass in the Israel Museum, The E. Dobkin Collection, Jerusalem 2003, no. 272*



119. ROMAN GLASS ARYBALLOS

Green glass, globular body, two thick trailed handles from 'collar-like' mouth to shoulder, flattened and indented base. Silvery iridescence. Ex private coll. L.C, Belgium, 1986; Galeie Drees Archeo, Brussels 2013. H. 8,5 - 9 cm. Intact
1st - 3rd cent. AD

€ 4.975

Cf. I. Isings, *Form 61 var.*; J.W. Hayes, *Roman and Pre-Roman Glass in the Royal Ontario Museum, Toronto 1975, no. 123*; Groen/v. Rossum, *Heerlen 2011, pp. 100ff*



120. LIGHT GREEN 'POMEGRANATE' GLASS FLASK

Unguentarium with bulbous body, ribbed at lower part, cylindrical neck, flaring rim folded inward, base of seven small feet. Ex priv. coll. J. G., Netherlands, acq. from Gallery Stormbroek 2004. H. 9,7 cm. Intact.
3rd - 4th cent. AD

€ 975



121. ROMAN LIGHT GREEN FLASK

Rounded body decorated with relief figure of eight, long straight neck, flaring to everted mouth. Ex priv. coll. C.M., Netherlands, acq. from coll. C.A. Hessing. 1999, Neth. H. 16,7 cm. Intact
3rd - 4th cent. AD

€ 7.000



122. ROMAN LARGE FUSIFORM GLASS UNGUENTARIUM

Free-blown, translucent, long tapering body with tall cylindrical neck, everted rim, decoration of blue glass band below mouth. Ex priv. coll. J.O.P., Netherlands, acq. Tefaf 2014; before, coll. M.v.S. Netherlands 2013. H. 30,3 cm. Intact. Mounted on persapex stand
3rd - 4th cent. AD

€ 3.250

Cf. 3000 Jahre Glaskunst, *Kunstmuseum Luzern 1981, nr. 361*; Y. Israeli, *Ancient Glass in the Israel Museum, The E. Dobkin Collection, Jerusalem 2003, no. 387*



123. BLUE GLASS DOUBLE UNGUENTARIUM

Free-blown bluish turquoise bodies, pincer-formed double tube, openwork zigzag glass threads below rim, applied spiral threading around mid body. Silver pin inside. Ex priv. coll. J.G. Neth., acq. from L. Decruyenaere, Brussel 2011. H. 12. cm. Intact. Mounted
4th - 5th cent. AD

€ 4.500

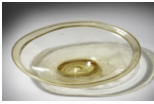
Cf. Y. Israeli, *Ancient Glass in the Israel Museum, The E. Dobkin Collection, Jerusalem 2003, no. 287*



124. ROMAN GREEN GLASS FOOTED GOBLET

Thin bluish green bell-shaped body on short stem and splayed discus foot, base pressed inwards; everted rounded rim; body decorated with wheel-cut bands. Ex priv. coll. M. Wunsch, New York 1980s-1990s; coll. J.O.P., Netherlands 2015, acq. from J.D. Cahn AG, Basel 2015. H. 9,3 cm. Intact
4th - 5th cent. AD

€ 3.000



125. YELLOW GREEN FOOTED OVAL DISH

Rim folded outwards and over, shallow dish to form a broad, thickened rim, central kick and separately attached oval foot with faint tooled decoration on the exterior. Originally priv. coll. Perthshire 1900-1965, hence coll. of the Estate of the late Ellen Broun; acq. from Bonhams London, 2022 lot 114.

L. 19,5 cm. Intact

5th - 6th cent. AD

€ 4.500

Cf. For tooling of the foot: D.B. Harden, Roman Glass from Karanis, Oxford 1936, no. 17

JEWELLERY



126. NEAR EASTERN, PAIR OF GOLD EARRINGS

Large rings, partly twisted, adorned with tiny 'ribbed' rings, one with extra glass bead, terminating in small loop at underside of quite large bull's head with rounded bulging eyes, tiny horns and dotted relief band at base of neck. Ex Heritage of Civilization Inc., London, acq. from auction London 2022.

Diam. 4,5 x 3 cm. Mounted

4th - 3rd cent. BC

€ 10.000



127. EGYPTIAN GREEN FAIENCE SCARAB RING

Finely detailed blue green faience scarab engraved with 'SA -Wadjet' a duck and a winged cobra 'Son of Wadjet', goddess of protection for Lower Egypt. Set in modern gold ring. Ex priv. coll. E.J. Stoel, Netherlands 1980s,

L. scarab: 1,8 cm. Diam. ring: 2 cm.

New Kingdom, 18th - 19th Dyn., c. 1580 - 1050 BC

€ 5.750



128. GREEK GOLD PAIR OF 'LEECH TYPE' EARRINGS

Pair of earrings with filigree decoration.

Ex priv. coll. P.F., Netherlands 2013.

H. 2,3 cm

6th - 5th cent. BC

€ 2.750

Cf. F.H. Marshall, Catalogue of Greek, Etruscan and Roman, British Museum repr. 1969, no.1593



129. GREEK GOLD EARRING

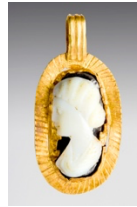
Central rosette with heart-shaped leaves around in filigree.

Pin at the back. Ex priv. coll. H.J.A, UK, before 1975.

L. 2 cm.

5th - 3rd cent. BC

€ 3.750



130. ROMAN GOLD CAMEO PENDANT

Integrated ribbed loop, the oval shaped cell with radiating strokes to the flange border, the inset agate-onyx cameo with profile female bust to the left, fine detailed face, her wavy hair plaited and wound in a bun, style of Faustina Junior, wife Marcus Aurelius. Cameo reset in later gold setting. Ex priv. coll. C. M., London, UK; formerly in a private New York collection; acquired in the 1980s.

H. 3,6 cm. Weight 5,92 gr

2nd - 4th cent. AD

€ 7.500

Cf. F.H. Marshall, Catalogue of Greek, Etruscan and Roman, British Museum repr. 1969, for discussion



131. ROMAN GOLD RING

Dark orange cornelian stone engraved with a scene of seated goddess Fortuna with rudder at her feet and holding a cornucopiae in right raised hand, being wreathed by a winged god Mercury, the gobetween of the gods and humans, and a patron of the merchants.

Ex coll. Jacques Schulman BV, Amsterdam 1986. Setting modern.

Diam 1,8 x 1,2cm. 1st - 2nd cent. AD

€ 5.000.



132. EARLY BYZANTINE BRONZE ATTACHMENT WITH LAZARUS

Fragmental attachment of a relic chest with two figures clad in long garment turned to the left, left figure holding papyrus and his mantle in his left hand, his right hand with an unidentifiable object pointing to a small round temple, XP monogram before his head, text of LAZARVS at either side of his head; figure at right side, standing to left in long ribbed garment, holding sort of a crook or curved candle, small animal at his left foot and a small naked figure kneeling at his right foot turned to the right side, text above H - N.

Ex priv. coll. A. G., Netherlands, inherited, 1990s-2020

Dim. 10 x 9,2 cm

5th - 6th cent. AD, c. 400 - 500 AD

€ 10.000



133. COPTIC TEXTILE FRAGMENT

Large fragment of the neck area of a tunica, clavus consisting of two registers decoration in black wool on linen; upper register with a row of medallions, lower register with row of standards in arches, chess pattern alongside; running animals at left side.

Ex priv. coll. B. A., Netherlands, before 1985, from stock of Stork factory Hengelo, Netherlands, intended as a promotional gift.

Dim. 48 x cm. Framed.

5th - 7th cent. AD

€ 1.850

=====#=====